



## STYLE # 2030 Tall

July 7, 2014

**DESCRIPTION:** V-Neck Commando Sweater with Polar Fleece Lining. Name plate, badge plate, and epaulettes swift attached.

**SHOULDER & ELBOW PATCHES FABRIC:** 100% nylon

**CONTENT:** 30% Polyester / 33% Wool / 37% Acrylic

**FABRIC TYPE:** 2 x 1 Rib Knit

**GAUGE:** 7gg

**FIT:** Classic

**COLOR:** Black (368), Dark Navy (4019)

**PRODUCT:** Commando Sweaters

**GENDER:** Unisex

**SIZE RANGE:** XS-6XL

**SIZE CLASS:** Unisex Adult Regular

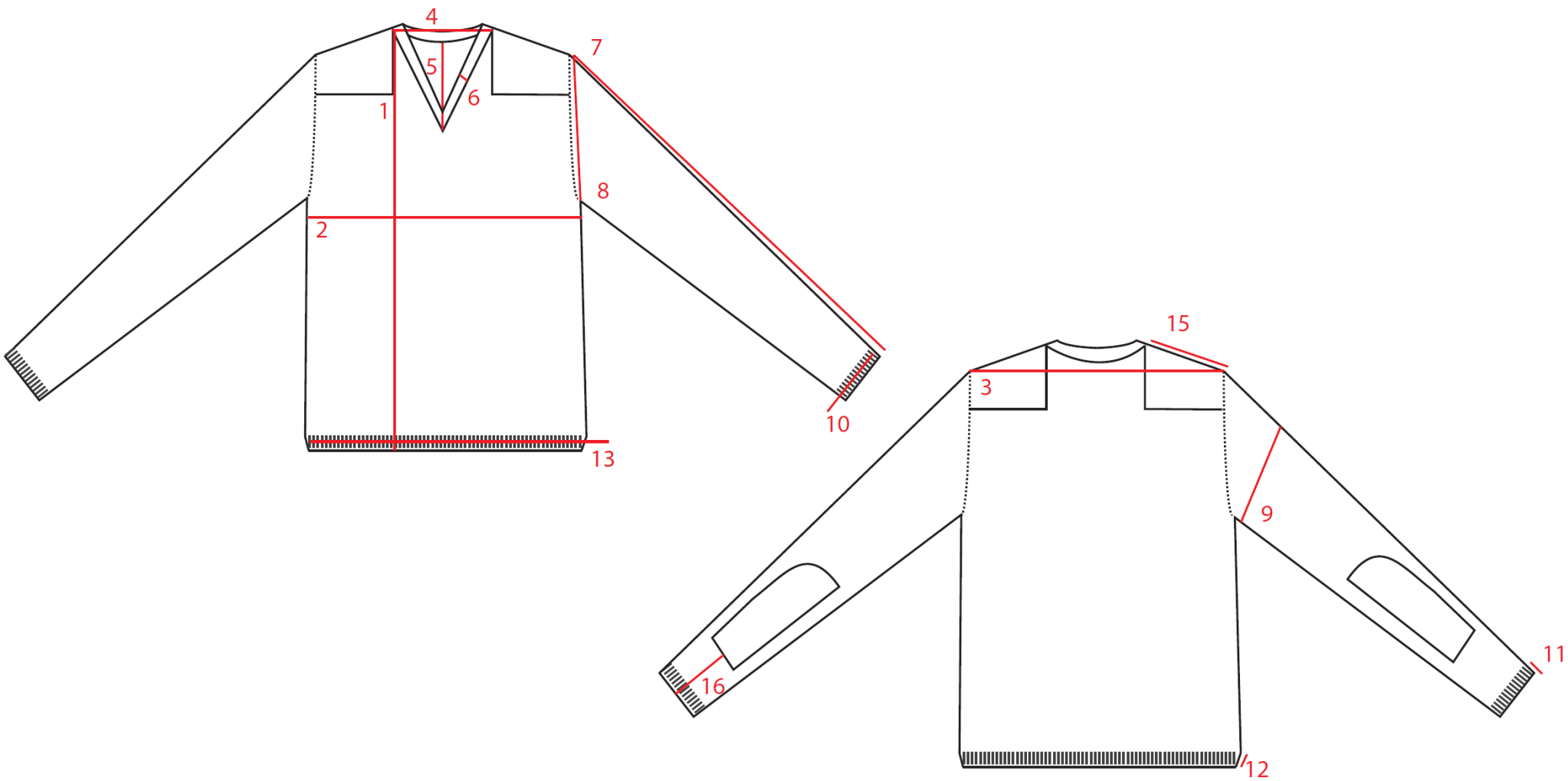
**LINING:** 100% Polyester Fleece

**YARN SIZES:** (11gg 2x1 Rib) 1/32s + 100 x 144F

## GRADE SHEET

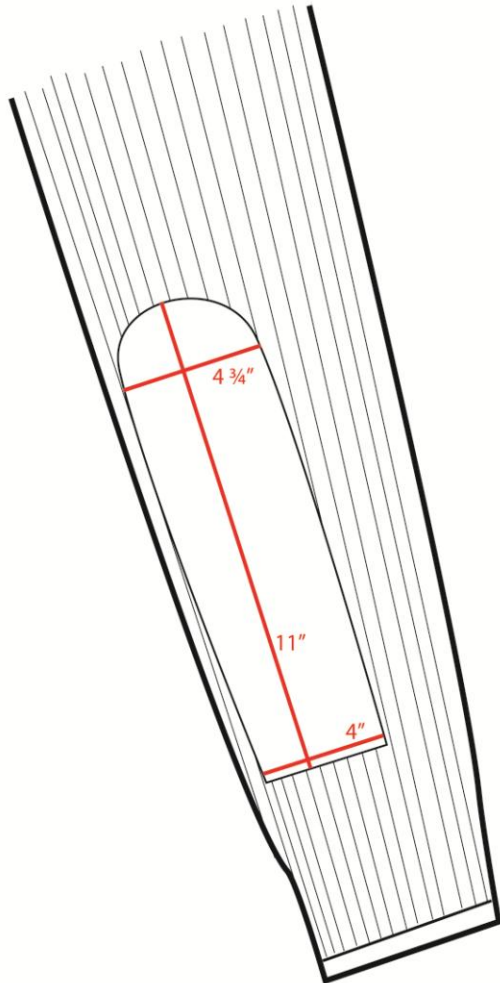
Point of Measurement (P.O.M)	XS	S	M	L	XL	2XL	3XL	4XL	5XL	6XL	TOL (+/-)
1.Length (From HSP)	26½	27½	28½	29½	30½	31½	32½	33½	34½	35½	1
2.Chest (1" below armhole)	17	19	21	23	25	27	29	31	33	35	1
3.Shoulders(Seam to Seam)	15 ½	17	18 ½	20	21	22	23	24	25	26	½
4.Neck Width Opening (Including Rib)	6 ¼	6 ½	6 ½	7	7	7	7 ½	7 ¾	8	8 ¼	¼
5. Front Neck Drop (Seam to seam)	6¼	6¼	6½	6¼	7	7¼	7½	7¾	8	8¼	¼
6.Collar Binding Rib	1 ¼	1 ¼	1 ¼	1 ¼	1 ¼	1 ¼	1 ¼	1 ¼	1 ¼	1 ¼	-
7.Sleeve Length (From Shoulder)	25	25½	26	26½	27	27½	28	28½	29	29½	1
8.Armhole(Straight seam to seam)	9	9½	10	10½	11	11½	12	12½	13	13½	½
9.Bicep 1" (From Shoulder)	7	7 ½	8	8 ½	9	9 ½	10	10½	11	11½	½
10. Cuff Width (Flat)	3 ⅞	4	4 ⅞	4¼	4 ⅜	4½	4⅞	4¾	4 ⅞	5	¼
11.Cuff Binding	¼	¼	¼	¼	¼	¼	¼	¼	¼	¼	-
12.Waistband Binding	¼	¼	¼	¼	¼	¼	¼	¼	¼	¼	-
13.Sweep	15½	17½	19½	21½	23½	25½	27½	29½	31½	33½	1
14.Epaulette Length (Width - 1¾")	4 ¾	5 ¾	6 ½	7	7 ½	8	8 ¼	8 ⅝	9	9 ⅝	¼
15. Shoulder Patch (Width - 8½")	4 ½	5 ¼	6	6 ½	7	7 ½	7 ¾	8 ⅞	8 ½	8 ⅞	¼
16.Elbow Patch Height	4	4 ¼	4 ½	4 ¾	5	5 ¼	5 ½	5 ⅞	6	6 ¼	¼

# P.O.M SKETCH



# ELBOW PATCHES & EPAULETTE

## Elbow Patch



## Epaulette

