



STYLE # 8080

July 17, 2014

DESCRIPTION: V-Neck Commando Sweater with Button Epaulettes. Poly-Acrylic Patches on Shoulders & Elbows. Nameplate & Badgeplate Swift Attached.

CONTENT: 100% Durapil™ Acrylic

FABRIC TYPE: 2 x 2 Rib

FIT: Classic

SIZE RANGE: XS-5XL

PRODUCT: Public Safety, Commando Sweater

GENDER: Unisex

GAUGE: 7 gg

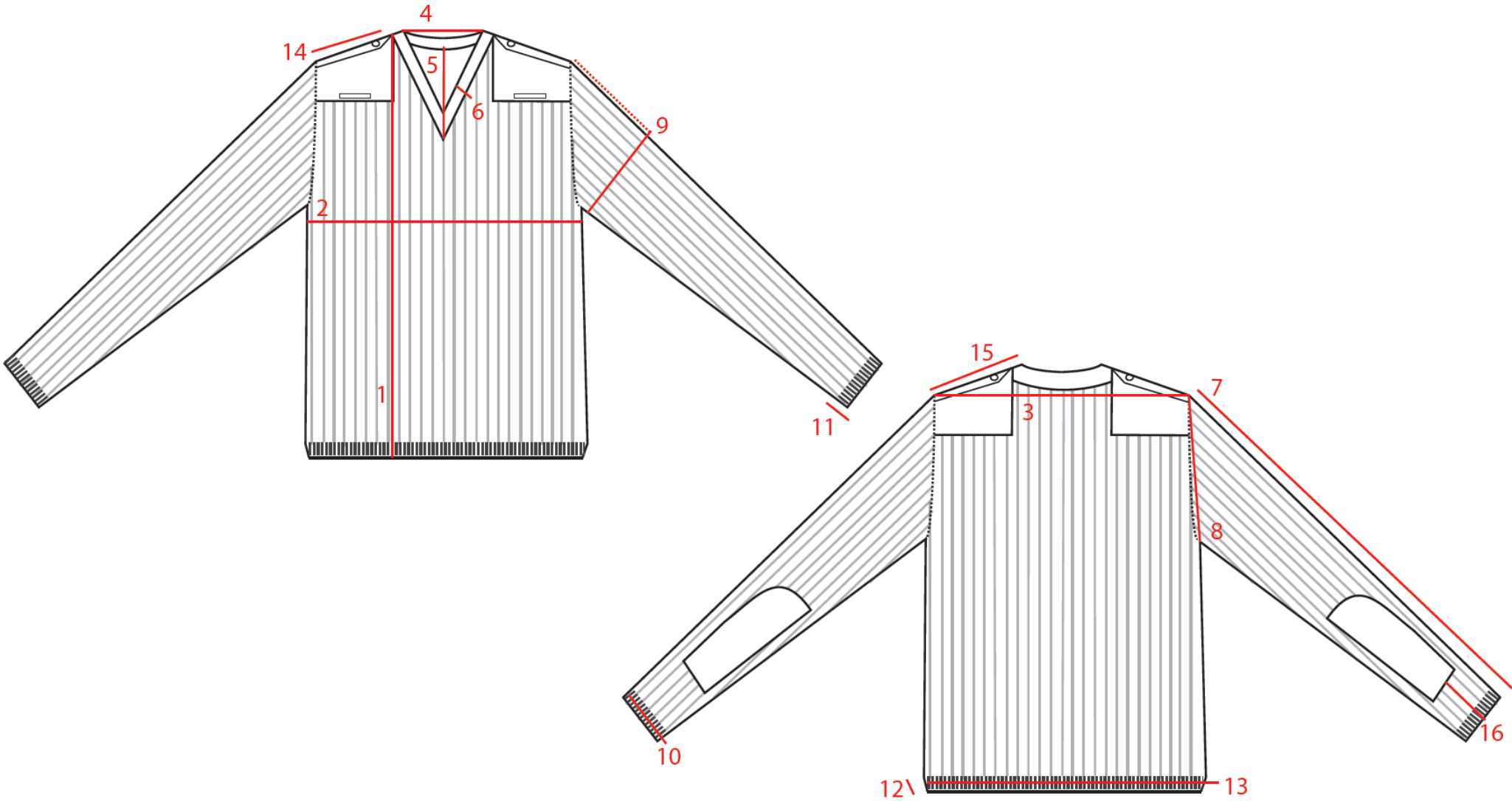
SIZE CLASS: Unisex Adult Regular

COLOR: Black (368), Navy (468)

GRADE SHEET

Point of Measurement (P.O.M)	XS	S	M	L	XL	2XL	3XL	4XL	5XL	TOL (+/-)
1.Length (From HSP)	25	26	27	28	29	30	31	32	33	1
2.Chest (1" below armhole)	18 ½	19 ½	21	22 ½	24	25 ½	27	28 ½	30	1
3.Shoulders(Seam to Seam)	18	19	19 ½	20 ½	21 ½	22 ½	24	25	26	½
4. Neck Width Opening (Excluding Rib)	5 ¼	5 ¼	5 ¾	5 ¾	5 ¾	5 ¾	6	6 ¼	6 ¼	¼
5. Front Neck Drop (Seam to seam)	5 ¼	5 ¼	5 ¾	5 ¾	5 ¾	5 ¾	6	6 ¼	6 ¼	½
6.Collar Binding Rib	1 ¼	1 ¼	1 ¼	1 ¼	1 ¼	1 ¼	1 ¼	1 ¼	1 ¼	-
7.Sleeve Length	22	23	24	24 ½	25	25 ½	26	26 ½	27	1
8.Armhole(Straight seam to seam)	8 ½	9	9 ½	10	10 ½	11	11 ½	12	12 ½	½
9.Bicep (7" from shoulder seam)	6 ½	6 ½	7	7 ½	8	8 ½	9	9	9 ½	½
10. Cuff Width (Flat)	3 ½	3 ½	3 ¾	4	4	4 ½	4 ½	4 ½	4 ½	¼
11.Cuff Rib	2 ½	2 ½	2 ½	2 ½	2 ½	2 ½	2 ½	2 ½	2 ½	-
12.Waistband Rib	2 ½	2 ½	2 ½	2 ½	2 ½	2 ½	2 ½	2 ½	2 ½	-
13.Sweep	14 ½	15 ½	17	18 ½	20	21 ½	23	24 ½	26	1
14. Epaulette Length (Width - 1 ¾")	5 ¼	5 ½	5 ½	5 ½	5 ¾	6 ¼	6 ¾	7 ¼	7 ¾	¼
15.Shoulder Patch Length (Width - 11")	5 ¼	5 ½	5 ½	5 ¾	6	6 ½	7	7 ½	8	¼
16.Elbow Patch Height (From edge of cuff)	4	4 ¼	4 ½	4 ¾	5	5 ¼	5 ½	5 ¾	6	¼

P.O.M SKETCH



ELBOW PATCH

