

Hawaiian Camp Shirt

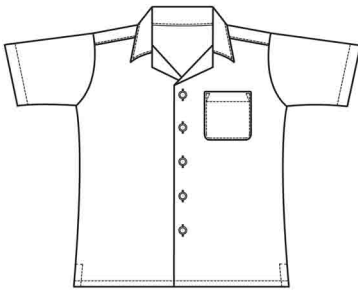
Style 1015



Product Information:

- 50% Cotton/50% Polyester
- 6.0 oz. wt.
- Short sleeve
- Left chest patch pocket
- Square hemmed shirt tail with side vents
- Machine washable
- Unisex sizes: XS – 6XL

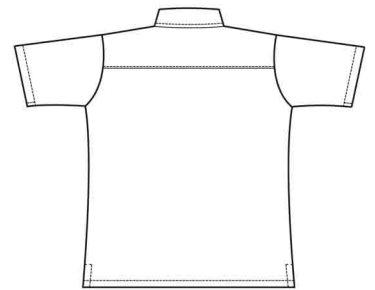
Front



Care Details:

Machine wash ~ warm permanent press.
 Only non-chlorine bleach when needed.
 Tumble dry ~ medium permanent press.
 Warm iron if needed.

Back



Product Measurements

Sizes	XS	S	M	L	XL	2XL	3XL	4XL	5XL	6XL
Neck Width	14	15	16	17	18	19	20	21	22	23
Chest Width	39 ^{1/2}	43 ^{1/2}	47 ^{1/2}	51 ^{1/2}	55 ^{1/2}	59 ^{1/2}	63 ^{1/2}	67 ^{1/2}	71 ^{1/2}	75 ^{1/2}
Center Back Length	25 ^{1/2}	26	30	30 ^{1/2}	31	31 ^{1/2}	32	34 ^{1/2}	35	35 ^{1/2}
Sleeve Length (Center back)	17 ^{1/4}	18 ^{1/4}	21 ^{1/4}	22 ^{1/4}	23 ^{1/4}	24 ^{1/4}	25 ^{1/4}	26 ^{1/4}	27 ^{1/4}	28 ^{1/4}

Colors:



003
Yellow



004
Green



012
Red