

Men's Short-Sleeve Easy Care Oxford Style 1027



Product Information:

- 60% Cotton/40% Polyester
- 4.4 oz.wt.
- Wrinkle – less easy care finish
- Short sleeve
- Left chest pocket
- Box pleat back
- Laundry friendly
- Regular; S – 3XL
- Tall; L – 6XL

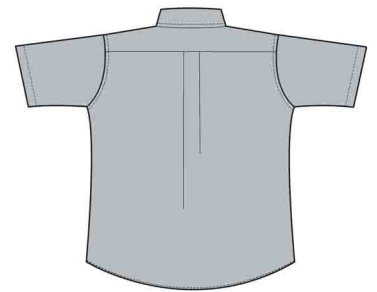
Front



Care Details:

Machine wash ~ warm.
Only non-chlorine bleach when needed.
Tumble dry ~ medium.
Remove promptly.
Iron if needed ~ medium.

Back



Product Measurements

Sizes		S	M	L	XL	2XL	3XL	4XL	5XL	6XL
Neck Width		14 ^{1/2}	15 ^{1/2}	16 ^{1/2}	17 ^{1/2}	18 ^{1/2}	19 ^{1/2}	20 ^{1/2}	21 ^{1/2}	22 ^{1/2}
Chest Width		42	46	50	54	58	62	66	70	74
Center Back Length	Regular	31	31 ^{1/2}	32	32 ^{1/2}	33	33 ^{1/2}	-	-	-
	Tall	-	-	34	34 ^{1/2}	35	35 ^{1/2}	36	36 ^{1/2}	37
Sleeve Length (Center back)		19 ^{1/2}	20 ^{1/4}	20 ^{5/8}	21 ^{3/4}	22 ^{1/2}	23 ^{3/8}	24 ^{3/8}	24 ^{7/8}	25 ^{1/4}

Colors:

