

# Easy Care Poplin Camp Shirt

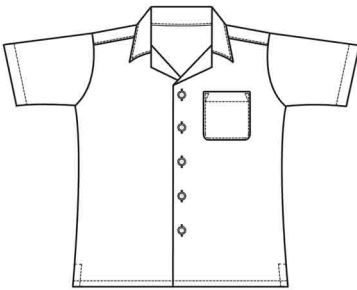
## Style 1029



### Product Information:

- 65% Polyester/ 35% Cotton Poplin; 4.25 oz. wt.
- Poplin camp made from soft ringspun fabric
- Full cut with traditional camp collar
- Short sleeve, left chest pocket, matching buttons
- Easy care with stain and wrinkle resistant finish
- Wicks moisture, laundry friendly, machine washable
- Unisex sizes: XXS - 6XL

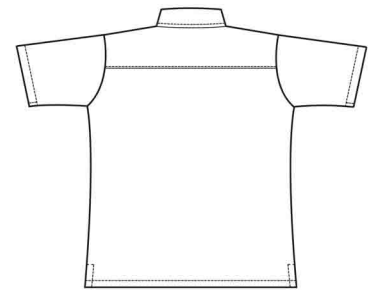
Front



### Care Details:

Machine wash ~ warm permanent press.  
Tumble dry ~ medium permanent press.  
Remove promptly.  
Touch up with iron if needed ~ warm.  
**DO NOT USE FABRIC SOFTENERS OR DRYER SHEETS.**

Back



### Product Measurements

Sizes	XXS	XS	S	M	L	XL	2XL	3XL	4XL	5XL	6XL
Neck Width	13	14	15	16	17	18	19	20	21	22	23
Chest Width	35 <sup>1/2</sup>	39 <sup>1/2</sup>	43 <sup>1/2</sup>	47 <sup>1/2</sup>	51 <sup>1/2</sup>	55 <sup>1/2</sup>	59 <sup>1/2</sup>	63 <sup>1/2</sup>	67 <sup>1/2</sup>	71 <sup>1/2</sup>	75 <sup>1/2</sup>
Center Back Length	Regular	25	25 <sup>1/2</sup>	26	30	30 <sup>1/2</sup>	31	31 <sup>1/2</sup>	32	-	-
	Tall	-	-	-	-	-	-	-	34 <sup>1/2</sup>	35	35 <sup>1/2</sup>
Sleeve Length (Center back)	16 <sup>1/4</sup>	17 <sup>1/4</sup>	18 <sup>1/4</sup>	21 <sup>1/4</sup>	22 <sup>1/4</sup>	23 <sup>1/4</sup>	24 <sup>1/4</sup>	25 <sup>1/4</sup>	26 <sup>1/4</sup>	27 <sup>1/4</sup>	28 <sup>1/4</sup>

### Colors:



000  
White



005  
Tan



007  
Navy



010  
Black



012  
Red



013  
Burgundy



041  
Royal



044  
Dark  
Teal



061  
French  
Blue