

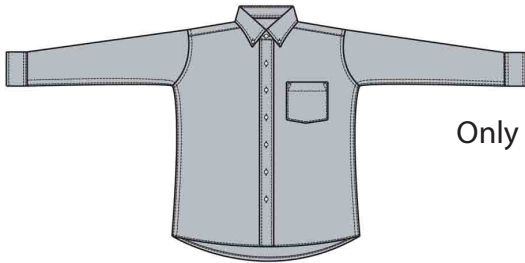
# Men's Long-Sleeve Easy Care Oxford Style 1077



## Product Information:

- 60% Cotton/40% Polyester
- 4.4 oz. wt.
- Wrinkle – less easy care finish
- Button down collar
- Long sleeve
- Dual sleeve lengths
- Left chest pocket
- Box pleat back
- Laundry friendly
- Regular; S – 3XL
- Tall; L – 6XL

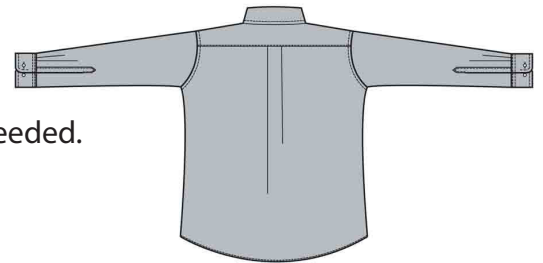
Front



## Care Details:

Machine wash ~ warm.  
Only non-chlorine bleach when needed.  
Tumble dry ~ medium.  
Remove promptly.  
Iron if needed ~ medium.

Back



## Product Measurements

Sizes		S	M	L	XL	2XL	3XL	4XL	5XL	6XL
Neck Width		14 <sup>1/2</sup>	15 <sup>1/2</sup>	16 <sup>1/2</sup>	17 <sup>1/2</sup>	18 <sup>1/2</sup>	19 <sup>1/2</sup>	20 <sup>1/2</sup>	21 <sup>1/2</sup>	22 <sup>1/2</sup>
Chest Width		42	46	50	54	58	62	66	70	74
Center Back Length	Regular	31	31 <sup>1/2</sup>	32	32 <sup>1/2</sup>	33	33 <sup>1/2</sup>	-	-	-
	Tall	-	-	34	34 <sup>1/2</sup>	35	35 <sup>1/2</sup>	36	36 <sup>1/2</sup>	37
Long Sleeve Length (Center back)	30/31	31 <sup>1/2</sup>	31 <sup>1/2</sup>	-	-	-	-	-	-	-
	32/33	33 <sup>1/2</sup>	33 <sup>1/2</sup>	33 <sup>1/2</sup>	33 <sup>1/2</sup>	-	-	-	-	-
	34/35	-	35 <sup>1/2</sup>	35 <sup>1/2</sup>	35 <sup>1/2</sup>	35 <sup>1/2</sup>	35 <sup>1/2</sup>	35 <sup>1/2</sup>	35 <sup>1/2</sup>	35 <sup>1/2</sup>
	36/37	-	-	37 <sup>1/2</sup>	37 <sup>1/2</sup>	37 <sup>1/2</sup>	37 <sup>1/2</sup>	37 <sup>1/2</sup>	37 <sup>1/2</sup>	37 <sup>1/2</sup>

## Colors:

