

Men's Mid-Weight Long-Sleeve Denim Shirt

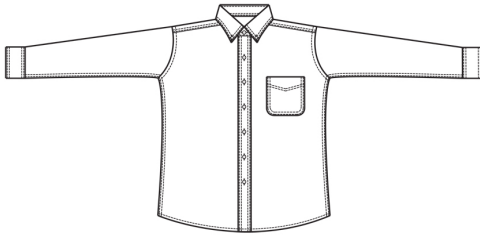
Style 1093



Product Information:

- 100% Cotton denim
- 6.5 oz. weight
- Pre-washed relaxed fit
- Left chest pocket
- Two button adjustable cuff
- Laundry friendly
- Regular, S – 3XL
- Tall, L – 6XL

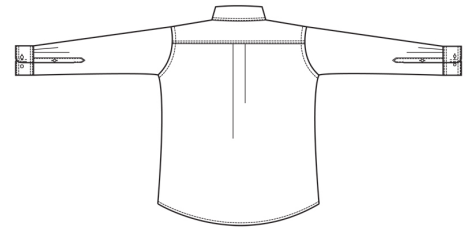
Front



Care Details:

Machine wash with similar colors ~ cold gentle cycle.
DO NOT BLEACH.
Tumble dry ~ medium.
Iron if needed ~ warm.

Back



Product Measurements

Sizes	S	M	L	XL	2XL	3XL	4XL	5XL	6XL
Neck Width	14 ^{3/4}	15 ^{3/4}	16 ^{3/4}	17 ^{3/4}	18 ^{3/4}	19 ^{3/4}	20 ^{3/4}	21 ^{3/4}	22 ^{3/4}
Chest Width	43 ^{1/2}	47 ^{1/2}	51 ^{1/2}	55 ^{1/2}	59 ^{1/2}	63 ^{1/2}	67 ^{1/2}	71 ^{1/2}	75 ^{1/2}
Center Back Length	Regular	31	31 ^{3/4}	32 ^{1/2}	33 ^{1/4}	34	34 ^{3/4}	-	-
	Tall	-	-	34 ^{1/2}	35 ^{1/4}	36	36 ^{3/4}	37 ^{1/2}	38 ^{1/4}
Long Sleeve Length (Center back)	Regular	32 ^{1/2}	33 ^{1/2}	35 ^{1/2}	35 ^{1/2}	35 ^{1/2}	35 ^{1/2}	-	-
	Tall	-	-	37 ^{1/2}	37 ^{1/2}	37 ^{1/2}	37 ^{1/2}	37 ^{1/2}	37 ^{1/2}

Colors:



007
Navy
Denim