

Men's Traditional Broadcloth Short-Sleeve Shirt

Style 1110



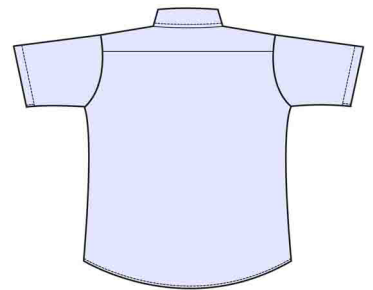
Product Information:

- 65% Polyester/35% Cotton
- 3.1 oz. wt.
- Seven button placket front
- Short sleeve
- Point collar
- Two pockets
- Easy care fabric
- Laundry friendly
- Regular, S – 3XL
- Tall, L – 6XL

Front



Back



Care Details:

Machine wash ~ warm.
 Only non-chlorine bleach when needed.
 Tumble dry ~ medium.
 Remove promptly.
 Iron if needed ~ warm.

Product Measurements

Sizes	S	M	L	XL	2XL	3XL	4XL	5XL	6XL
Neck Width	14 ^{3/4}	15 ^{3/4}	16 ^{3/4}	17 ^{3/4}	18 ^{3/4}	19 ^{3/4}	20 ^{3/4}	21 ^{3/4}	22 ^{3/4}
Chest Width	43	47	51	55	59	63	67	71	75
Center Back Length	Regular	32	32 ^{1/2}	33	33 ^{1/2}	34	34 ^{1/2}	-	-
	Tall	-	-	35	35 ^{1/2}	36	36 ^{1/2}	37	37 ^{1/2}
Sleeve Length (Cap)	10	10 ^{1/2}	11	11 ^{1/2}	11 ^{3/4}	11 ^{3/4}	11 ^{3/4}	11 ^{3/4}	11 ^{3/4}

Colors:



000
White



001
Blue