

Men's Short-Sleeve Flyer Shirt

Style 1210



Product Information:

- 65% Polyester/35% Cotton poplin
- 4.25 oz. wt.
- Short sleeve with no badge tab
- 2 Flap pockets with matching buttons and pencil opening
- Seven button placket front with matching buttons and two functional epaulets
- Laundry friendly and easy care
- Regular, S – 3XL
- Tall, L – 6XL

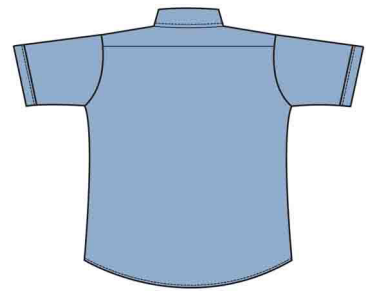
Front



Care Details:

Machine wash ~ warm permanent press.
 Only non-chlorine bleach when needed.
 Tumble dry ~ medium permanent press.
 Remove promptly.
 Iron if needed ~ medium.
 May be dry cleaned.

Back



Product Measurements

Sizes		S	M	L	XL	2XL	3XL	4XL	5XL	6XL
Neck Width		14 ^{1/2}	15 ^{1/2}	16 ^{1/2}	17 ^{1/2}	18 ^{1/2}	19 ^{1/2}	20 ^{1/2}	21 ^{1/2}	22 ^{1/2}
Chest Width		42	46	50	54	58	62	66	70	74
Center Back Length	Regular	31	31 ^{1/2}	32	32 ^{1/2}	33	33 ^{1/2}	-	-	-
	Tall	-	-	34	34 ^{1/2}	35	35 ^{1/2}	36	36 ^{1/2}	37
Sleeve Length (Center back)		19 ^{1/2}	20 ^{1/4}	20 ^{5/8}	21 ^{3/4}	22 ^{1/2}	23 ^{3/8}	24 ^{3/8}	24 ^{7/8}	25 ^{1/4}

Colors:



000
White



001
Blue