

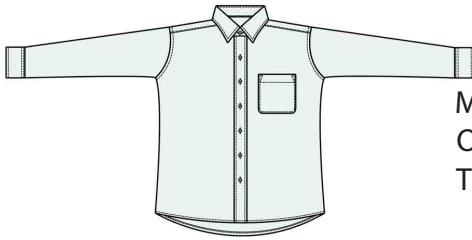
Men's Long-Sleeve Easy Care Poplin with Point Collar Style 1287



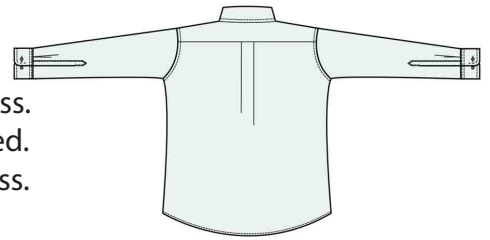
Product Information:

- 65% Polyester/ 35% Cotton
- 4.25 oz.wt.
- Long sleeve with dual sleeve lengths
- Soft point collar with matching buttons
- Relaxed fit
- Laundry friendly
- Regular, S – 3XL
- Tall, L – 6XL

Front



Back



Care Details:

Machine wash ~ warm permanent press.
Only non-chlorine bleach when needed.
Tumble dry ~ medium permanent press.
Remove promptly.
Iron if needed ~ medium.
May be dry cleaned.

Product Measurements

Sizes		S	M	L	XL	2XL	3XL	4XL	5XL	6XL
Neck Width		14 ^{1/2}	15 ^{1/2}	16 ^{1/2}	17 ^{1/2}	18 ^{1/2}	19 ^{1/2}	20 ^{1/2}	21 ^{1/2}	22 ^{1/2}
Chest Width		42	46	50	54	58	62	66	70	74
Center Back Length	Regular	31	31 ^{1/2}	32	32 ^{1/2}	33	33 ^{1/2}	-	-	-
	Tall	-	33 ^{1/2}	34	34 ^{1/2}	35	35 ^{1/2}	36	36 ^{1/2}	37
Long Sleeve Length (Center back)	30/31	31 ^{1/2}	-	-	-	-	-	-	-	-
	32/33	33 ^{1/2}	33 ^{1/2}	33 ^{1/2}	33 ^{1/2}	-	-	-	-	-
	34/35	-	35 ^{1/2}	35 ^{1/2}	35 ^{1/2}	35 ^{1/2}	35 ^{1/2}	35 ^{1/2}	35 ^{1/2}	35 ^{1/2}
	36/37	37 ^{1/2}	37 ^{1/2}	37 ^{1/2}	37 ^{1/2}	37 ^{1/2}	37 ^{1/2}	37 ^{1/2}	37 ^{1/2}	37 ^{1/2}

Colors:



000
White



005
Tan



010
Black



028
Espresso



041
Royal



058
Rust



061
French
Blue



063
Wine