

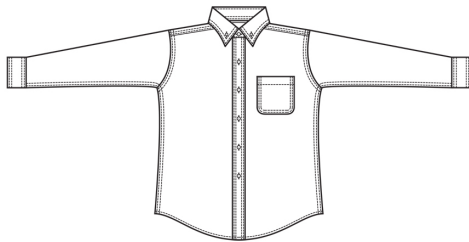
Men's Long-Sleeve Soft Touch Poplin Style 1295



Product Information:

- 65% Polyester/35% Cotton
- 4.0 oz. wt.
- Long sleeves
- Button down collar
- Left chest pocket
- Back box pleat
- Matching buttons
- Fade, shrink and wrinkle resistant
- Machine washable
- Men's sizes S – 3XL
- Talls: L – 6XL

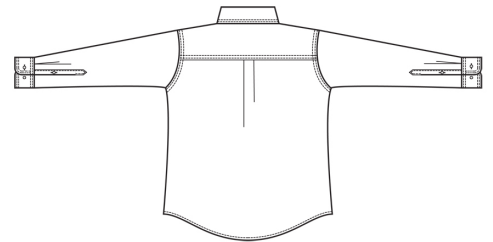
Front



Care Details:

Machine wash ~ warm permanent press.
Only non-chlorine bleach when needed.
Tumble dry ~ medium permanent press.
Remove promptly.
Iron if needed ~ medium.
May be dry cleaned.

Back



Product Measurements

Sizes		S	M	L	XL	2XL	3XL	4XL	5XL	6XL
Neck Width		14 ^{1/2}	15 ^{1/2}	16 ^{1/2}	17 ^{1/2}	18 ^{1/2}	19 ^{1/2}	20 ^{1/2}	21 ^{1/2}	22 ^{1/2}
Chest Width		42	46	50	54	58	62	66	70	74
Center Back Length	Regular	31	31 ^{1/2}	32	32 ^{1/2}	33	33 ^{1/2}	-	-	-
	Tall	-	-	34	34 ^{1/2}	35	35 ^{1/2}	36	36 ^{1/2}	37
Long Sleeve Length (Center back)	Regular	32 ^{1/2}	33 ^{1/2}	35 ^{1/2}	35 ^{1/2}	35 ^{1/2}	35 ^{1/2}	-	-	-
	Tall	-	-	37 ^{1/2}	37 ^{1/2}	37 ^{1/2}	37 ^{1/2}	37 ^{1/2}	37 ^{1/2}	37 ^{1/2}

Colors:

