

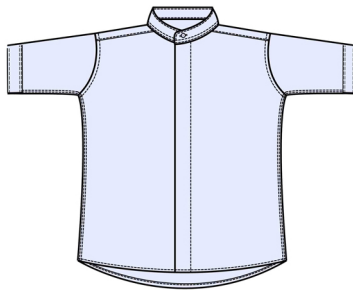
Men's Short-Sleeve Banded Collar Shirt Style 1346



Product Information:

- 65% Polyester/35% Cotton
- 3.1 oz. wt. colors/3.5 oz. wt. white
- Banded collar
- Short sleeves
- Covered placket with matching buttons
- Straight back yoke seam
- Easy care wrinkle resistant finish
- Machine washable
- Talls available
- Men's sizes: S - 3XL
- Tall sizes: L - 6XL

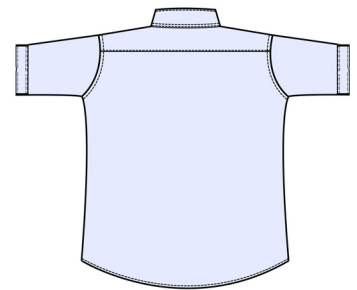
Front



Care Details:

Machine wash ~ warm.
Only non-chlorine bleach when needed.
USE NO SOLVENTS.
Tumble dry ~ warm.
Iron if needed ~ warm.

Back



Product Measurements

Sizes	S	M	L	XL	2XL	3XL	4XL	5XL	6XL
Neck Width	14 ^{1/2}	15 ^{1/2}	16 ^{1/2}	17 ^{1/2}	18 ^{1/2}	19 ^{1/2}	20 ^{1/2}	21 ^{1/2}	22 ^{1/2}
Chest Width	42	46	50	54	58	62	66	70	74
Center Back Length	Regular	31	31 ^{1/2}	32	32 ^{1/2}	33	33 ^{1/2}	-	-
	Tall	-	-	34	34 ^{1/2}	35	35 ^{1/2}	36	36 ^{1/2}
Sleeve Length (Center back)	19 ^{1/2}	20 ^{1/4}	20 ^{5/8}	21 ^{3/4}	22 ^{1/2}	23 ^{3/8}	24 ^{3/8}	24 ^{7/8}	25 ^{1/4}

Colors:

