

# Men's Long-Sleeve Pinpoint Oxford with Point Collar Style 1965



## Product Information:

- 70% Cotton/30% Polyester
- 4.25/4.5 oz. wt.
- Cotton rich 80's 2 – ply fabric
- Single needle tailoring, fused collars
- Point collar
- Long sleeve
- Dual sleeve length
- Laundry friendly
- Sizes: Regulars S – 3XL
- Talls L – 6XL

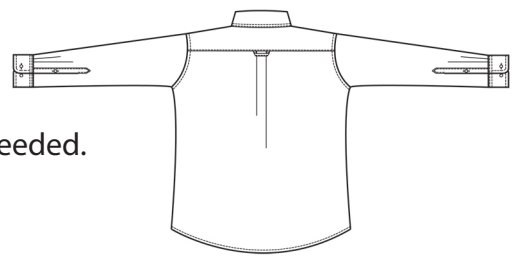
Front



## Care Details:

Machine wash ~ warm.  
Only non-chlorinated bleach when needed.  
Tumble dry ~ medium.  
Remove promptly.  
Iron if needed ~ medium.

Back



## Product Measurements

Sizes		S	M	L	XL	2XL	3XL	4XL	5XL	6XL
Neck Width		14 1/2	15 1/2	16 1/2	17 1/2	18 1/2	19 1/2	20 1/2	21 1/2	22 1/2
Chest Width		42	46	50	54	58	62	66	70	74
Center Back Length	Regular	31	31 1/2	32	32 1/2	33	33 1/2	-	-	-
	Tall	-	-	34	34 1/2	35	35 1/2	36	36 1/2	37
Long Sleeve Length (Center back)	30/31	31 1/2	31 1/2	-	-	-	-	-	-	-
	32/33	33 1/2	33 1/2	33 1/2	33 1/2	-	-	-	-	-
	34/35	-	35 1/2	35 1/2	35 1/2	35 1/2	35 1/2	35 1/2	35 1/2	35 1/2
	36/37	-	37 1/2	37 1/2	37 1/2	37 1/2	37 1/2	37 1/2	37 1/2	37 1/2

## Colors:



000  
White



061  
French  
Blue