

Men's Chino Pleated Short - 9" Inseam

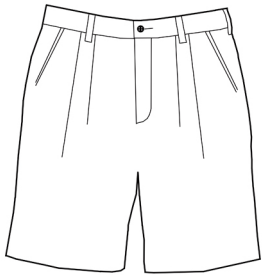
Style 2470



Product Information:

- 65% Polyester/35% Cotton; 7.5 oz. wt.
- Two front pockets
- Two set-in back pockets
- Button closure with brass zipper
- 9" inseam
- Laundry friendly
- Sizes 28 – 54

Front



Care Details:

Machine wash ~ warm permanent press.
Only non-chlorine bleach when needed.
Tumble dry ~ medium permanent press.
Remove promptly.
Iron if needed ~ medium.
May be dry cleaned.

Back



Product Measurements

Sizes	28	30	32	34	36	38	40	42	44	46	48	50	52	54
Waist	28	30	32	34	36	38	40	42	44	46	48	50	52	54
Inseam	9 ^{1/2}	9 ^{1/2}	9 ^{1/2}	9 ^{1/2}	9 ^{1/2}	9 ^{1/2}	9 ^{1/2}	9 ^{1/2}	9 ^{1/2}	9 ^{1/2}	9 ^{1/2}	9 ^{1/2}	9 ^{1/2}	9 ^{1/2}

Colors:



005
Tan



007
Navy



010
Black



075
Sand