

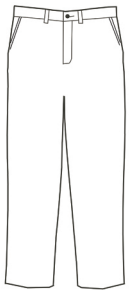
# Men's Multi-Use Pocket Pant Style 2564



## Product Information:

- 65% Polyester/35% Cotton; 7.25 oz. wt.
- Button closure
- Brass zipper
- Two front pockets
- Two set-in back pockets
- Multi-use pocket with snap closure
- Machine washable
- Sizes: 28 -54 (35" & 37" waist size not available)

Front



## Care Details:

Machine wash ~ warm permanent press.  
Only non-chlorine bleach when needed.  
Tumble dry ~ low permanent press.  
Cool Iron.

Back



## Product Measurements

Sizes		28	30	32	34	36	38	40	42	44	46	48	50	52	54
Waist		28 <sup>1/2</sup>	30 <sup>1/2</sup>	32 <sup>1/2</sup>	34 <sup>1/2</sup>	36 <sup>1/2</sup>	38 <sup>1/2</sup>	40 <sup>1/2</sup>	42 <sup>1/2</sup>	44 <sup>1/2</sup>	46 <sup>1/2</sup>	48 <sup>1/2</sup>	50 <sup>1/2</sup>	52 <sup>1/2</sup>	54 <sup>1/2</sup>
Inseam	Regular	35 <sup>1/2</sup>	35 <sup>1/2</sup>	35 <sup>1/2</sup>	35 <sup>1/2</sup>	35 <sup>1/2</sup>	35 <sup>1/2</sup>	35 <sup>1/2</sup>	35 <sup>1/2</sup>	35 <sup>1/2</sup>	35 <sup>1/2</sup>	35 <sup>1/2</sup>	35 <sup>1/2</sup>	35 <sup>1/2</sup>	35 <sup>1/2</sup>
	Long	38 <sup>1/2</sup>	38 <sup>1/2</sup>	38 <sup>1/2</sup>	38 <sup>1/2</sup>	38 <sup>1/2</sup>	38 <sup>1/2</sup>	38 <sup>1/2</sup>	38 <sup>1/2</sup>	38 <sup>1/2</sup>	38 <sup>1/2</sup>	38 <sup>1/2</sup>	38 <sup>1/2</sup>	38 <sup>1/2</sup>	38 <sup>1/2</sup>

## Colors:



005  
Tan



007  
Navy



010  
Black