

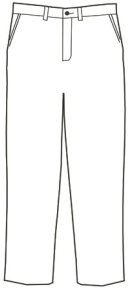
# Men's Chino Flat Front Pant Style 2570



## Product Information:

- 65% Polyester/35% Cotton; 7.5 oz. wt.
- Two front and back pockets
- Button closure with brass zipper
- Laundry friendly
- Talls available
- Sizes: 28 – 54

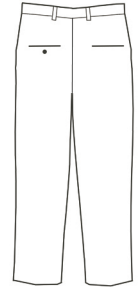
Front



## Care Details:

Machine wash ~ warm permanent press.  
Only non-chlorine bleach when needed.  
Tumble dry ~ medium permanent press.  
Remove promptly.  
Iron if needed ~ medium.  
May be dry cleaned.

Back



## Product Measurements

Sizes	28	30	32	34	36	38	40	42	44	46	48	50	52	54
Waist	28	30	32	34	36	38	40	42	44	46	48	50	52	54
Inseam	35 <sup>1/2</sup>	35 <sup>1/2</sup>	35 <sup>1/2</sup>	35 <sup>1/2</sup>	35 <sup>1/2</sup>	35 <sup>1/2</sup>	35 <sup>1/2</sup>	35 <sup>1/2</sup>	38 <sup>1/2</sup>	38 <sup>1/2</sup>	38 <sup>1/2</sup>	38 <sup>1/2</sup>	38 <sup>1/2</sup>	38 <sup>1/2</sup>

## Colors:



005  
Tan



007  
Navy



010  
Black