

Men's Chino Cargo Pant Style 2575



Product Information:

- 65% Polyester/35% Cotton; 7.5 oz. wt.
- Two front and back pockets
- Two cargo pockets with sewn down flaps
- Button closure with brass zipper
- Laundry friendly
- Talls available
- Sizes: 28 – 54

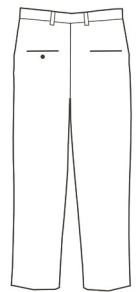
Side



Care Details:

Machine wash ~ warm permanent press.
Only non-chlorine bleach when needed.
Tumble dry ~ medium permanent press.
Remove promptly.
Iron if needed ~ medium.
May be dry cleaned.

Back



Product Measurements

Sizes	28	30	32	34	36	38	40	42	44	46	48	50	52	54
Waist	28	30	32	34	36	38	40	42	44	46	48	50	52	54
Inseam	35 ^{1/2}	35 ^{1/2}	35 ^{1/2}	35 ^{1/2}	35 ^{1/2}	35 ^{1/2}	35 ^{1/2}	35 ^{1/2}	38 ^{1/2}	38 ^{1/2}	38 ^{1/2}	38 ^{1/2}	38 ^{1/2}	38 ^{1/2}

Colors:



005
Tan



007
Navy



010
Black