

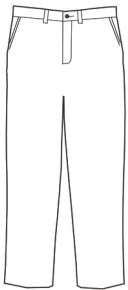
# Men's Utility Flat Front Pant Style 2577



## Product Information:

- 65% Polyester/35% Cotton; 7.25 oz. wt.
- Two front pockets and back pockets
- Laundry friendly
- Talls available
- Button closure with brass zipper
- Sizes: 28 – 54

Front



## Care Details:

Machine wash ~ warm permanent press.  
Only non-chlorine bleach when needed.  
Tumble dry ~ medium permanent press.  
Remove promptly.  
Iron if needed ~ medium.  
May be dry cleaned.

Back



## Product Measurements

Sizes		28	30	32	34	36	38	40	42	44	46	48	50	52	54
Waist		28 <sup>1/2</sup>	30 <sup>1/2</sup>	32 <sup>1/2</sup>	34 <sup>1/2</sup>	36 <sup>1/2</sup>	38 <sup>1/2</sup>	40 <sup>1/2</sup>	42 <sup>1/2</sup>	44 <sup>1/2</sup>	46 <sup>1/2</sup>	48 <sup>1/2</sup>	50 <sup>1/2</sup>	52 <sup>1/2</sup>	54 <sup>1/2</sup>
Hemmed		30", 32", and 34"			30", 32", and 34"			30", 32", and 34"							
Inseam	Regular	35 <sup>1/2</sup>	35 <sup>1/2</sup>	35 <sup>1/2</sup>	35 <sup>1/2</sup>	35 <sup>1/2</sup>	35 <sup>1/2</sup>	35 <sup>1/2</sup>	35 <sup>1/2</sup>	35 <sup>1/2</sup>	35 <sup>1/2</sup>	35 <sup>1/2</sup>	35 <sup>1/2</sup>	35 <sup>1/2</sup>	35 <sup>1/2</sup>
	Tall	38 <sup>1/2</sup>	38 <sup>1/2</sup>	38 <sup>1/2</sup>	38 <sup>1/2</sup>	38 <sup>1/2</sup>	38 <sup>1/2</sup>	38 <sup>1/2</sup>	38 <sup>1/2</sup>	38 <sup>1/2</sup>	38 <sup>1/2</sup>	38 <sup>1/2</sup>	38 <sup>1/2</sup>	38 <sup>1/2</sup>	38 <sup>1/2</sup>

## Colors:



005  
Tan



007  
Navy



010  
Black