

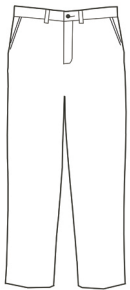
Men's Easy Fit Chino Flat Front Pant Style 2578



Product Information:

- 65% Polyester/35% Cotton; 7.25 oz. wt.
- Hidden stretch waistband
- Button closure with brass zipper
- Two front and back pockets
- Laundry friendly
- Talls available
- Sizes: 28 – 54

Front



Care Details:

Machine wash ~ warm permanent press.
Only non-chlorine bleach when needed.
Tumble dry ~ medium permanent press.
Remove promptly.
Iron if needed ~ medium.
May be dry cleaned.

Back



Product Measurements

Sizes	28	30	32	34	36	38	40	42	44	46	48	50	52	54
Waist (Relaxed)	28	30	32	34	36	38	40	42	44	46	48	50	52	54
Waist (Stretched)	30	32	34	36	38	40	42	44	46	48	50	52	54	56
Inseam	35 ^{1/2}	35 ^{1/2}	35 ^{1/2}	35 ^{1/2}	35 ^{1/2}	35 ^{1/2}	35 ^{1/2}	35 ^{1/2}	38 ^{1/2}	38 ^{1/2}	38 ^{1/2}	38 ^{1/2}	38 ^{1/2}	38 ^{1/2}

Colors:



007
Navy



010
Black



015
Khaki