

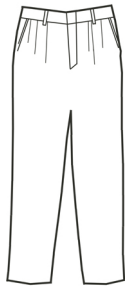
Men's Lightweight Poly/Wool Pleated Pant Style 2650



Product Information:

- 75% Polyester/25% Worsted Wool; 9.5 oz. wt.
- Hook and eye closure with brass zipper
- Two front and back pockets
- Tall sizes available
- Sizes: 28 – 54

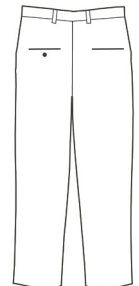
Front



Care Details:

Machine wash ~ cold.
Remove promptly.
DO NOT BLEACH.
Tumble dry ~ gentle cycle.
Steam iron ~ low.
Use press cloth.

Back



Product Measurements

Sizes	28	30	32	34	36	38	40	42	44	46	48	50	52	54
Waist	28	30	32	34	36	38	40	42	44	46	48	50	52	54
Inseam	35 ^{1/2}	35 ^{1/2}	35 ^{1/2}	35 ^{1/2}	35 ^{1/2}	35 ^{1/2}	35 ^{1/2}	35 ^{1/2}	38 ^{1/2}	38 ^{1/2}	38 ^{1/2}	38 ^{1/2}	38 ^{1/2}	38 ^{1/2}

Colors:



007
Navy



009
Dark Grey



010
Black