

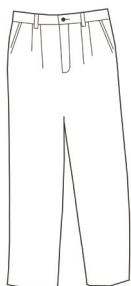
Men's Chino Pleated Pant Style 2670



Product Information:

- 65% Polyester/35% Cotton; 7.5 oz. wt.
- Two front and back pockets
- Button closure with brass zipper
- Laundry friendly
- Talls available
- Sizes: 28 – 54

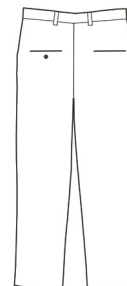
Front



Care Details:

Machine wash ~ warm permanent press.
Only non-chlorine bleach when needed.
Tumble dry ~ medium permanent press.
Remove promptly.
Iron if needed ~ medium.
May be dry cleaned.

Back



Product Measurements

Sizes	28	30	32	34	36	38	40	42	44	46	48	50	52	54
Waist	28	30	32	34	36	38	40	42	44	46	48	50	52	54
Inseam	35 ^{1/2}	35 ^{1/2}	35 ^{1/2}	35 ^{1/2}	35 ^{1/2}	35 ^{1/2}	35 ^{1/2}	35 ^{1/2}	38 ^{1/2}	38 ^{1/2}	38 ^{1/2}	38 ^{1/2}	38 ^{1/2}	38 ^{1/2}

Colors:



005
Tan



007
Navy



010
Black



019
Charcoal



075
Sand