

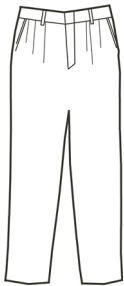
# Men's Tuxedo Pleated Pant Style 2790



## **Product Information:**

- 100% Polyester; 10/10.5 oz. wt.
- Year 'round weight
- Rubberized waistband
- Hook and eye closure with brass zipper
- Two front, two back pockets
- Black with satin side stripe
- Tall sizes available
- Sizes: 28 – 54

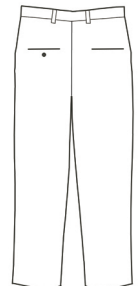
Front



## **Care Details:**

Machine wash ~ warm Gentle cycle.  
Only Non-Chlorine bleach.  
Tumble dry ~ low.  
Iron ~ cool.

Back



## **Product Measurements**

Sizes	28	30	32	34	36	38	40	42	44	46	48	50	52	54
Waist	28	30	32	34	36	38	40	42	44	46	48	50	52	54
Inseam	35 <sup>1/2</sup>	35 <sup>1/2</sup>	35 <sup>1/2</sup>	35 <sup>1/2</sup>	35 <sup>1/2</sup>	35 <sup>1/2</sup>	35 <sup>1/2</sup>	35 <sup>1/2</sup>	38 <sup>1/2</sup>	38 <sup>1/2</sup>	38 <sup>1/2</sup>	38 <sup>1/2</sup>	38 <sup>1/2</sup>	38 <sup>1/2</sup>

## **Colors:**



010  
Black