

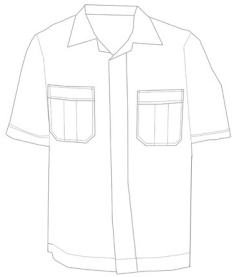
# Men's Service Shirt - Spun Poly Style 4276



## Product Information:

- 100% Spun Polyester
- Double action back with inverted pleat
- Inverted zipper closure
- Pleated patch chest pockets
- Side slits
- Machine washable and laundry friendly
- Sizes S – 4XL

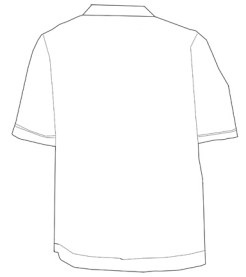
Front



## Care Details:

Machine wash ~ warm Gentle cycle.  
Only Non-Chlorine bleach.  
Tumble dry ~ low.  
Iron ~ cool.

Back



## Product Measurements

| Sizes               | XS                | S                 | M                 | L                 | XL                | 2XL               | 3XL               | 4XL               |
|---------------------|-------------------|-------------------|-------------------|-------------------|-------------------|-------------------|-------------------|-------------------|
| Neck Width          | 14                | 15 <sup>1/2</sup> | 17                | 18 <sup>1/2</sup> | 20                | 21 <sup>1/2</sup> | 23                | 24 <sup>1/2</sup> |
| Chest Width         | 41                | 45                | 49                | 53                | 57                | 61                | 65                | 69                |
| Center Back Length  | 29 <sup>1/2</sup> | 30                | 30 <sup>1/2</sup> | 31                | 31 <sup>1/2</sup> | 32                | 32 <sup>1/2</sup> | 33                |
| Sleeve Length (Cap) | 11 <sup>3/4</sup> | 12                | 12 <sup>1/4</sup> | 12 <sup>1/2</sup> | 12 <sup>3/4</sup> | 13                | 13 <sup>1/4</sup> | 13 <sup>1/2</sup> |

## Colors:



010  
Black