

# Men's Pincord Tunic

## Style 4287



### Product Information:

- 75% Polyester/25% Cotton
- Traditional cut with short sleeves
- One decorative button with hidden placket front
- No pockets
- Machine washable and laundry friendly
- Size: S - 4XL

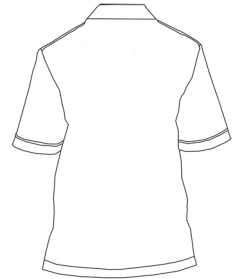
Front



### Care Details:

Machine wash warm ~ gentle cycle.  
Only non-chlorine bleach.  
Tumble dry ~ low.  
Iron ~ cool.

Back



### Product Measurements

Sizes	S	M	L	XL	2XL	3XL	4XL
	36	40	44	48	52	56	60
Chest	42 <sup>1/4</sup>	46 <sup>1/4</sup>	50 <sup>1/4</sup>	54 <sup>1/4</sup>	58 <sup>1/4</sup>	62 <sup>1/4</sup>	66 <sup>1/4</sup>
Center Back Length	29 <sup>3/4</sup>	30 <sup>1/4</sup>	30 <sup>3/4</sup>	31 <sup>1/4</sup>	31 <sup>3/4</sup>	32 <sup>1/4</sup>	32 <sup>3/4</sup>
Sleeve Length (Cap)	11 <sup>1/2</sup>	11 <sup>3/4</sup>	12	12 <sup>1/4</sup>	12 <sup>1/2</sup>	12 <sup>3/4</sup>	13

### Colors:



005  
Tan



007  
Navy



009  
Grey