

Women's Short-Sleeve Mid-Weight Denim Shirt

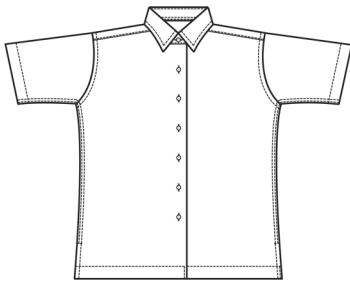
Style 5013



Product Information:

- 100% Cotton denim
- 6.5 oz. weight
- Pre-washed, feminine fit
- Square hemmed shirt-tail with side vents
- No pocket
- Short sleeve
- Laundry friendly
- Sizes XXS – 3XL

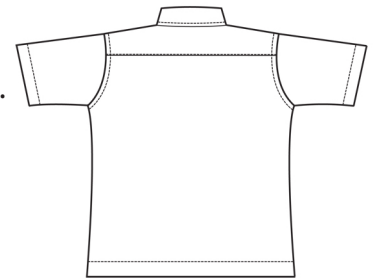
Front



Care Details:

Machine wash with similar colors ~ cold gentle cycle.
 DO NOT BLEACH.
 Tumble dry ~ medium.
 Iron if needed ~ warm.

Back



Product Measurements

Sizes	XXS	XS	S	M	L	XL	2XL	3XL
Neck Width	13 ^{1/2}	14 ^{1/2}	15 ^{1/2}	16 ^{1/2}	17 ^{1/2}	18 ^{1/2}	19 ^{1/2}	20 ^{1/2}
Bust	37 ^{1/2}	40 ^{1/2}	43 ^{1/2}	46 ^{1/2}	50 ^{1/2}	54 ^{1/2}	58 ^{1/2}	62 ^{1/2}
Center Back Length	24 ^{1/2}	25	25 ^{1/2}	26	26 ^{1/2}	27	27 ^{1/2}	28
Sleeve Length (Center back)	17	17 ^{1/2}	18	18 ^{1/2}	19	19 ^{1/2}	20	20 ^{1/2}

Colors:



007
 Denim
 Blue