

Women's Short-Sleeve Jewel Neck Blouse

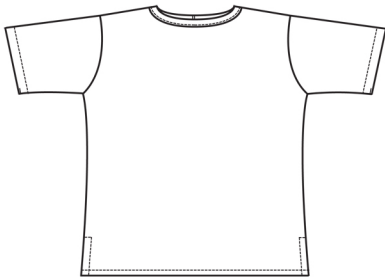
Style 5031



Product Information:

- 100% Polyester Crepe, 5.6 oz. wt.
- Jewel neckline with back keyhole closure
- Contoured body with side vents
- Short sleeve
- Squared shirttail hem
- Machine washable
- Sizes XXS - 3XL

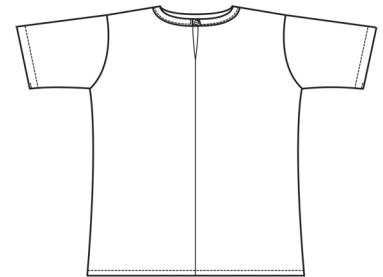
Front



Care Details:

Machine wash ~ cold.
Only non-chlorine bleach if needed.
Tumble dry ~ low.
Iron ~ cool.

Back



Product Measurements

Sizes	XXS	XS	S	M	L	XL	2XL	3XL
Neck Width	17	17 ^{1/2}	18	18 ^{3/4}	19 ^{5/8}	20 ^{5/8}	21 ^{5/8}	22 ^{5/8}
Bust	36 ^{1/2}	38 ^{1/2}	40 ^{1/2}	43 ^{1/2}	47	52	56	60
Center Back Length	23	23 ^{1/2}	24	24 ^{1/2}	25	25 ^{1/2}	26	26 ^{1/2}
Sleeve Length (Center back)	17 ^{1/4}	17 ^{5/8}	18	18 ^{1/2}	19 ^{1/8}	19 ^{7/8}	20 ^{5/8}	21 ^{1/4}

Colors:



000
White



010
Black



018
Mocha



061
French
Blue



071
Sky
Blue



075
Sand



078
Cornsilk