

Women's Long-Sleeve Jewel Neck Blouse

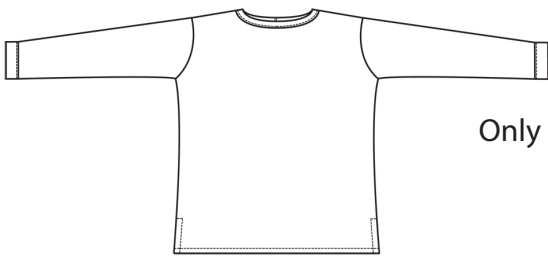
Style 5032



Product Information:

- 100% Polyester Crepe
- 5.6 oz. wt
- Jewel neckline with back keyhole closure
- Contoured body with side vents
- Long sleeve with narrow cuff
- Squared shirttail hem
- Machine washable
- Sizes XXS - 3XL

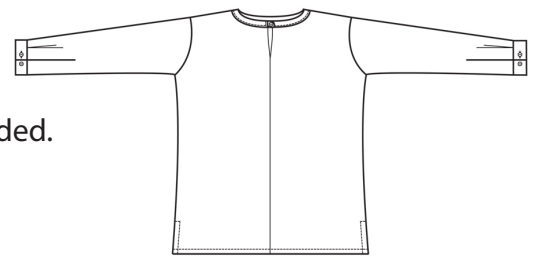
Front



Care Details:

Machine wash ~ cold.
Only non-chlorine bleach if needed.
Tumble dry ~ low.
Iron ~ cool.

Back



Product Measurements

| Sizes | XXS | XS | S | M | L | XL | 2XL | 3XL |
|-----------------------------|-------------------|-------------------|-------------------|-------------------|-------------------|-------------------|-------------------|-------------------|
| Neck Width | 17 | 17 ^{1/2} | 18 | 18 ^{3/4} | 19 ^{5/8} | 20 ^{5/8} | 21 ^{5/8} | 22 ^{5/8} |
| Bust | 36 ^{1/2} | 38 ^{1/2} | 40 ^{1/2} | 43 ^{1/2} | 47 | 52 | 56 | 60 |
| Center Back Length | 23 | 23 ^{1/2} | 24 | 24 ^{1/2} | 25 | 25 ^{1/2} | 26 | 26 ^{1/2} |
| Sleeve Length (Center back) | 30 ^{5/8} | 31 ^{1/8} | 31 ^{5/8} | 32 ^{1/2} | 33 ^{5/8} | 35 ^{1/8} | 36 ^{1/2} | 37 ^{3/8} |

Colors:



000
White



010
Black



018
Mocha



061
French
Blue



071
Sky
Blue



075
Sand



078
Cornsilk