

Women's 3/4 Sleeve Tailored Stretch Blouse

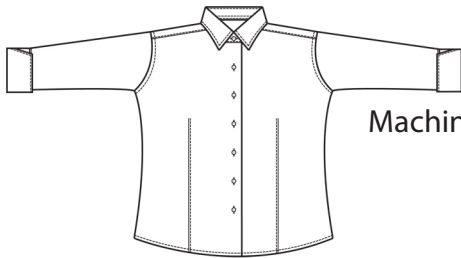
Style 5033



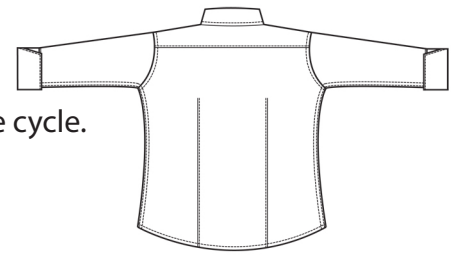
Product Information:

- 66% Cotton/30% Polyester/4% Spandex
- 3.3 oz. wt.
- Contouring side seams
- Front and back darts provide a stylish fit
- Detailed shirt-like soft collar
- Shirrtail hem allows you to wear the blouse tucked or untucked
- Easy care and machine washable
- Women's sizes: XXS - 3XL

Front



Back



Care Details:

Machine wash with similar colors ~ cold gentle cycle.

DO NOT BLEACH.

Tumble dry ~ medium.

Iron if needed ~ warm.

Product Measurements

Sizes	XXS	XS	S	M	L	XL	2XL	3XL
	0	2-4	6-8	10-12	14-16	18-20	22-24	26-28
Neck Opening	14 ^{1/4}	14 ^{3/4}	15 ^{1/4}	15 ^{7/8}	16 ^{5/8}	17 ^{5/8}	18 ^{5/8}	19 ^{5/8}
Bust	35 ^{1/2}	37 ^{1/2}	39 ^{1/2}	42	45	49	54	58
Center Back Length	25 ^{3/4}	26 ^{1/4}	26 ^{3/4}	27 ^{1/4}	27 ^{3/4}	28 ^{1/4}	28 ^{3/4}	29 ^{1/4}
Sleeve Length (Cap)	16 ^{3/8}	16 ^{5/8}	16 ^{7/8}	17 ^{1/8}	17 ^{3/8}	17 ^{3/4}	18	18 ^{1/4}

Colors:



000
White



001
Sky
Blue



002
Pink



010
Black



012
Red



013
Burgundy



061
French
Blue



103
Buttercup



204
Cucumber