

Women's Long-Sleeve V-Neck Tailored Stretch Blouse

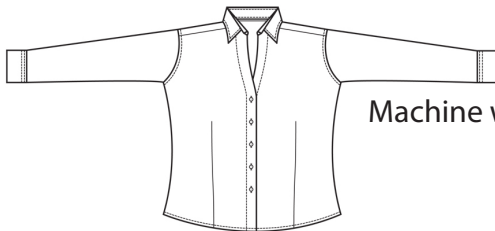
Style 5034



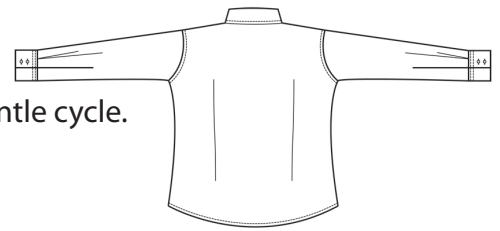
Product Information:

- 66% Cotton/30% Polyester/4% Spandex
- 3.3 oz. wt.
- V-neck tailored blouse, soft collar
- Contouring side seams
- Front and back darts
- Matching buttons, long sleeve
- Machine washable
- Sizes: XXS - 3XL

Front



Back



Care Details:

Machine wash with similar colors ~ cold gentle cycle.

DO NOT BLEACH.

Tumble dry ~ medium.

Iron if needed ~ warm.

Product Measurements

Sizes	XXS	XS	S	M	L	XL	2XL	3XL
	0	2-4	6-8	10-12	14-16	18-20	22-24	26-28
Neck Opening	13 ^{3/4}	14 ^{1/4}	14 ^{3/4}	15 ^{3/8}	16 ^{1/8}	17 ^{1/8}	18 ^{1/8}	19 ^{1/8}
Bust	35 ^{1/2}	37 ^{1/2}	39 ^{1/2}	42	45	49	54	58
Center Back Length	24 ^{3/4}	25 ^{1/4}	25 ^{3/4}	26 ^{1/4}	26 ^{3/4}	27 ^{1/4}	27 ^{3/4}	28 ^{1/4}
Sleeve Length (Centerback)	30 ^{3/8}	30 ^{7/8}	31 ^{3/8}	31 ^{7/8}	32 ^{1/2}	34	35	35 ^{3/4}

Colors:



000
White



001
Blue



002
Pink



010
Black



012
Red



013
Burgundy



061
French
Blue



103
Buttercup



204
Cucumber