

Women's 3/4-Sleeve Soft Collar Poplin Blouse

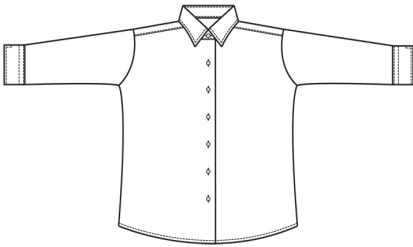
Style 5037



Product Information:

- 65% Polyester/35% Cotton
- 4.25 oz. wt.
- 3/4 sleeve
- Soft point collar with matching buttons
- Shirt has two darts in the back providing a contoured fit
- Shirt tail hem allows you to wear the blouse tucked or untucked
- Laundry friendly
- Women's sizes XXS – 3XL

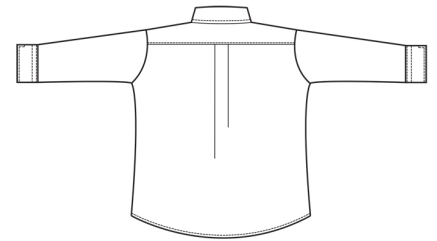
Front



Care Details:

Machine wash ~ warm permanent press.
 Only non-chlorine bleach when needed.
 Tumble dry ~ medium permanent press.
 Remove promptly.
 Iron if needed ~ medium.
 May be dry cleaned.

Back



Product Measurements

Sizes	XXS	XS	S	M	L	XL	2XL	3XL
Neck Width	13 ^{1/4}	14 ^{1/4}	15 ^{1/4}	16 ^{1/4}	17 ^{1/4}	18 ^{1/4}	19 ^{1/4}	20 ^{1/4}
Bust	36 ^{1/2}	39 ^{1/2}	42 ^{1/2}	45 ^{1/2}	49 ^{1/2}	53 ^{1/2}	57 ^{1/2}	61 ^{1/2}
Center Back Length	26 ^{1/4}	26 ^{5/8}	27	27 ^{3/8}	28	28 ^{5/8}	29 ^{1/4}	29 ^{7/8}
Sleeve Length (Center back)	23	24	25	26	27	28	29	30

Colors:

