

Women's Long-Sleeve Elegant Blouse

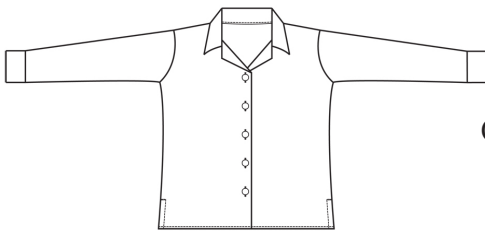
Style 5039



Product Information:

- 100% Polyester Crepe
- Detailed shirt-like collar
- Covered buttons on the placket and cuff
- Long sleeve with cuff
- Squared shirrtail hem
- Machine washable
- Sizes XXS - 3XL

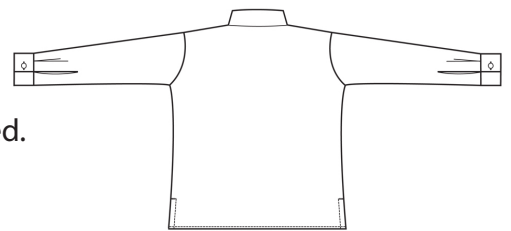
Front



Care Details:

Machine wash ~ cold.
Only non-chlorine bleach if needed.
Tumble dry ~ low.
Iron ~ cool.

Back



Product Measurements

Sizes	XXS	XS	S	M	L	XL	2XL	3XL
Neck Width	14 ^{1/4}	15 ^{1/4}	16 ^{1/4}	17 ^{1/4}	18 ^{1/4}	19 ^{1/4}	20 ^{1/4}	21 ^{1/4}
Bust	37	39	41	44	47 ^{1/2}	51 ^{1/2}	55 ^{1/2}	59 ^{1/2}
Center Back Length	23 ^{7/8}	24 ^{3/8}	24 ^{7/8}	25 ^{3/8}	25 ^{7/8}	26 ^{3/8}	26 ^{7/8}	27 ^{3/8}
Sleeve Length (Cap)	22 ^{7/8}	23 ^{3/8}	23 ^{7/8}	24 ^{3/8}	24 ^{7/8}	25 ^{3/8}	25 ^{7/8}	26 ^{3/8}

Colors:



000
White



010
Black



018
Mocha



061
French
Blue



071
Sky
Blue



075
Sand



078
Cornsilk