

Women's 3/4-Sleeve Soft Touch Poplin Blouse

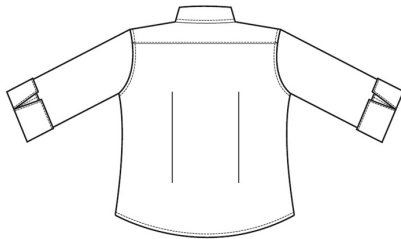
Style 5040



Product Information:

- 65% Polyester/35% Cotton
- Open neck
- Contouring side seams
- Back darts add shape
- Contrasting neck tape
- Shrink, fade and wrinkle resistant
- Machine washable
- Women's sizes XXS – 3XL

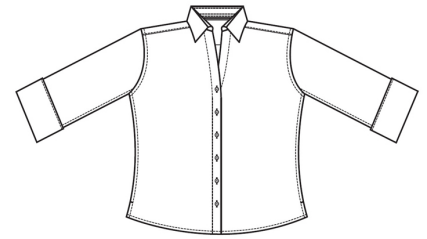
Front



Care Details:

Machine wash ~ warm permanent press.
 Only non-chlorine bleach when needed.
 Tumble dry ~ medium permanent press.
 Remove promptly.
 Iron if needed ~ medium.
 May be dry cleaned.

Back



Product Measurements

Sizes	XXS	XS	S	M	L	XL	2XL	3XL
	0	4	8	12	16	20	24	28
Neck Width	13 ^{3/4}	14 ^{1/4}	14 ^{3/4}	15 ^{3/8}	16 ^{1/8}	17 ^{1/8}	18 ^{1/8}	19 ^{1/8}
Bust	35 ^{1/2}	37 ^{1/2}	39 ^{1/2}	42	45	49	54	58
Center Back Length	24 ^{3/4}	25 ^{1/4}	25 ^{3/4}	26 ^{1/4}	26 ^{3/4}	27 ^{1/4}	27 ^{3/4}	28 ^{1/4}
Sleeve Length (Cap)	18 ^{3/4}	19	19 ^{1/4}	19 ^{1/2}	19 ^{3/4}	20 ^{1/8}	20 ^{3/8}	20 ^{5/8}

Colors:

