

Women's Heavy-Weight Denim Shirt - Long Sleeve

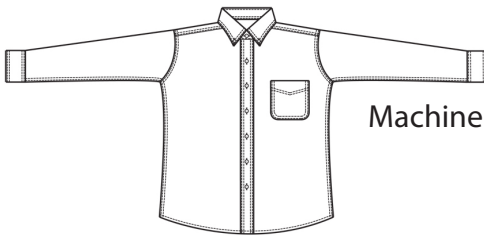
Style 5091



Product Information:

- Our best 8.5 oz. Pre-washed Cotton Denim
- Long sleeve
- Button down collar
- Left chest pocket
- Laundry friendly
- Women's sizes XS – 3XL

Front



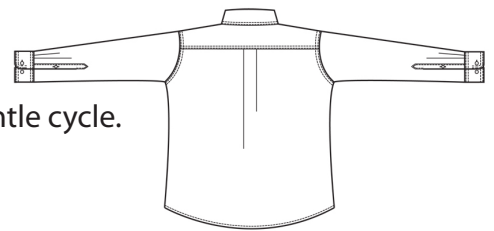
Machine wash with similar colors ~ cold gentle cycle.

DO NOT BLEACH.

Tumble dry ~ medium.

Iron if needed ~ warm.

Back



Product Measurements

Sizes	XXS	XS	S	M	L	XL	2XL	3XL
Neck Width	13 ^{1/2}	14 ^{1/2}	15 ^{1/2}	16 ^{1/2}	17 ^{1/2}	18 ^{1/2}	19 ^{1/2}	20 ^{1/2}
Bust	40	42	44	46	50	54	58	62
Center Back Length	25 ^{1/2}	26	26 ^{1/2}	27	27 ^{1/2}	28	28 ^{1/2}	29
Sleeve Length (Centerback)	30	31	32	33	34	35	36	37

Colors:



007
Navy
Denim