

# Women's Long-Sleeve Mid-Weight Denim Shirt

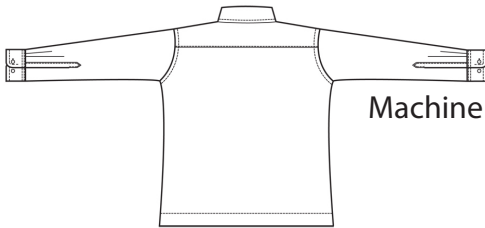
## Style 5093



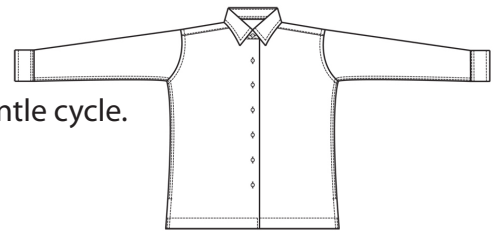
### Product Information:

- 100% Cotton denim
- 6.5 oz. weight
- Pre-washed feminine fit
- No pocket
- Square hemmed shirrtail with side vents
- Long sleeve
- Two button adjustable cuff
- Laundry friendly
- Sizes XXS – 3XL

Front



Back



### Care Details:

Machine wash with similar colors ~ cold gentle cycle.  
DO NOT BLEACH.  
Tumble dry ~ medium.  
Iron if needed ~ warm.

### Product Measurements

Sizes	XXS	XS	S	M	L	XL	2XL	3XL
Neck Width	13 <sup>1/2</sup>	14 <sup>1/2</sup>	15 <sup>1/2</sup>	16 <sup>1/2</sup>	17 <sup>1/2</sup>	18 <sup>1/2</sup>	19 <sup>1/2</sup>	20 <sup>1/2</sup>
Bust	37 <sup>1/2</sup>	40 <sup>1/2</sup>	43 <sup>1/2</sup>	46 <sup>1/2</sup>	50 <sup>1/2</sup>	54 <sup>1/2</sup>	58 <sup>1/2</sup>	62 <sup>1/2</sup>
Center Back Length	24 <sup>1/2</sup>	25	25 <sup>1/2</sup>	26	26 <sup>1/2</sup>	27	27 <sup>1/2</sup>	28
Sleeve Length (Center back)	30	31	32	33	34	35	36	37

### Colors:



007  
Denim  
Blue