

# Women's Short-Sleeve Traditional Broadcloth Shirt

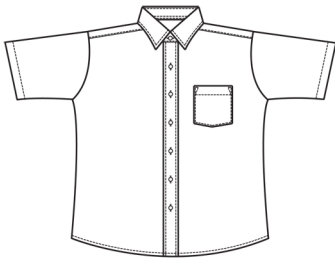
## Style 5100



### Product Information:

- 65% Polyester/35% Cotton Broadcloth
- 3.1 oz. wt.
- Seven button placket front
- Straight collar
- Short sleeve
- One pocket
- Easy care fabric
- Laundry friendly
- Sizes XXS – 3XL

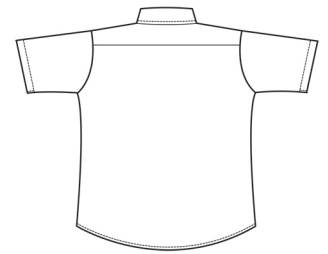
Front



### Care Details:

Machine wash ~ warm.  
 Only non-chlorine bleach when needed.  
 Tumble dry ~ medium.  
 Remove promptly.  
 Iron if needed ~ warm.

Back



### Product Measurements

Sizes	XXS	XS	S	M	L	XL	2XL	3XL
	0-2	4-6	8-10	12-14	16-18	20-22	24-26	28-30
Neck Width	13 <sup>1/2</sup>	14 <sup>1/2</sup>	15 <sup>1/2</sup>	16 <sup>1/2</sup>	17 <sup>1/2</sup>	18 <sup>1/2</sup>	19 <sup>1/2</sup>	20 <sup>1/2</sup>
Bust	40	42	44	46	50	54	58	62
Center Back Length	25 <sup>1/2</sup>	26	26 <sup>1/2</sup>	27	27 <sup>1/2</sup>	28	28 <sup>1/2</sup>	29
Sleeve Length (Cap)	7 <sup>3/4</sup>	8 <sup>1/4</sup>	8 <sup>3/4</sup>	9 <sup>1/2</sup>	10 <sup>1/2</sup>	11 <sup>1/2</sup>	12 <sup>1/2</sup>	13 <sup>1/2</sup>

### Colors:



000  
White



001  
Blue