

Women's Long-Sleeve Traditional Broadcloth Shirt

Style 5160



Product Information:

- 65% Polyester/35% Cotton
- 3.1 oz. wt.
- Seven button placket front
- Straight collar
- Long sleeve
- Two button adjustable cuff
- One pocket
- Easy care fabric
- Laundry friendly
- Sizes XXS – 3XL

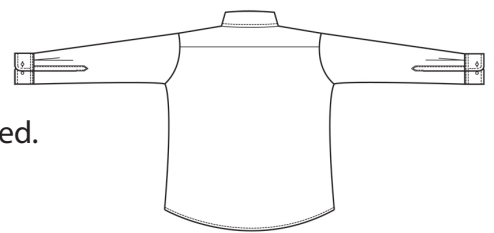
Front



Care Details:

Machine wash ~ warm.
 Only non-chlorine bleach when needed.
 Tumble dry ~ medium.
 Remove promptly.
 Iron if needed ~ warm.

Back



Product Measurements

Sizes	XXS	XS	S	M	L	XL	2XL	3XL
	0-2	4-6	8-10	12-14	16-18	20-22	24-26	28-30
Neck Width	13 ^{1/2}	14 ^{1/2}	15 ^{1/2}	16 ^{1/2}	17 ^{1/2}	18 ^{1/2}	19 ^{1/2}	20 ^{1/2}
Bust	40	42	44	46	50	54	58	62
Center Back Length	25 ^{1/2}	26	26 ^{1/2}	27	27 ^{1/2}	28	28 ^{1/2}	29
Sleeve Length (Centerback)	30	31	32	33	34	35	36	37

Colors:



000
White



001
Blue