

# Women's Short-Sleeve Flyer Shirt Style 5210



## Product Information:

- 65% Polyester/35% Cotton poplin
- 4.25 oz. wt.
- Short sleeve with no badge tab
- Two flap pockets with matching buttons and pencil opening
- Seven button placket front with matching buttons and two functional epaulets
- Laundry friendly and easy care
- Women's sizes XXS – 3XL

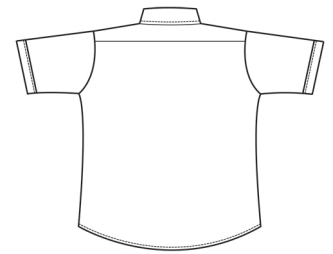
Front



## Care Details:

Machine wash ~ warm permanent press.  
Only non-chlorine bleach when needed.  
Tumble dry ~ medium permanent press.  
Remove promptly.  
Iron if needed ~ medium.  
May be dry cleaned.

Back



## Product Measurements

Sizes	XXS	XS	S	M	L	XL	2XL	3XL
Neck Width	14 <sup>1/2</sup>	15	15 <sup>1/2</sup>	16	17	18	19	20
Bust	38 <sup>1/2</sup>	40 <sup>1/2</sup>	42 <sup>1/2</sup>	45 <sup>1/2</sup>	49	54	58	62
Center Back Length	26 <sup>1/4</sup>	26 <sup>3/4</sup>	27 <sup>1/4</sup>	27 <sup>3/4</sup>	28 <sup>1/4</sup>	28 <sup>3/4</sup>	29 <sup>1/4</sup>	29 <sup>3/4</sup>
Sleeve Length (Cap)	10	10 <sup>1/8</sup>	10 <sup>1/4</sup>	10 <sup>3/8</sup>	10 <sup>5/8</sup>	10 <sup>7/8</sup>	11 <sup>1/8</sup>	11 <sup>3/8</sup>

## Colors:



000  
White



001  
Blue