

Women's Short-Sleeve Easy Care Poplin Shirt

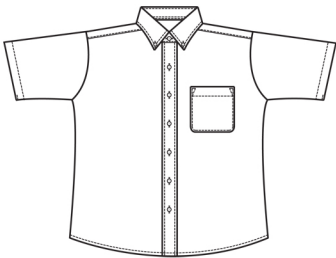
Style 5230



Product Information:

- 65% Polyester/35% Cotton
- 4.25 oz. wt.
- VISA soil release finish
- Short sleeve
- Button – down collar
- Wood tone buttons on placket and collar
- Laundry friendly
- Relaxed fit
- Women's sizes XXS – 3XL

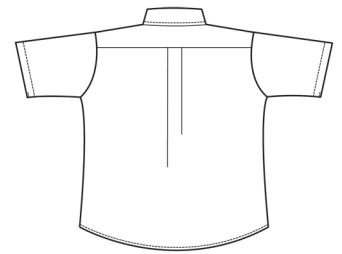
Front



Care Details:

Machine wash separately ~ warm permanent press.
 Only non-chlorine bleach when needed.
 Tumble dry ~ medium permanent press.
 Remove promptly.
 Iron if needed ~ medium.
 May be dry cleaned.

Back



Product Measurements

Sizes	XXS	XS	S	M	L	XL	2XL	3XL
Neck Width	14 ^{1/2}	15	15 ^{1/2}	16	17	18	19	20
Bust	39	41	43	46	49 ^{1/2}	54 ^{1/2}	58 ^{1/2}	62 ^{1/2}
Center Back Length	26 ^{1/4}	26 ^{3/4}	27 ^{1/4}	27 ^{3/4}	28 ^{1/4}	28 ^{3/4}	29 ^{1/4}	29 ^{3/4}
Sleeve Length (Center back)	17 ^{7/8}	18 ^{1/4}	18 ^{5/8}	19 ^{1/8}	19 ^{3/4}	20 ^{1/2}	21 ^{1/4}	21 ^{7/8}

Colors:

