

# Women's Long-Sleeve Soft Collar Poplin Blouse

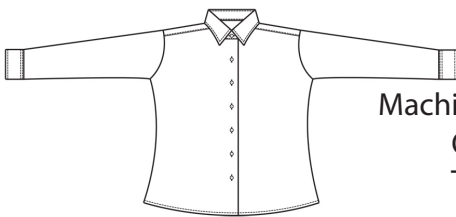
## Style 5287



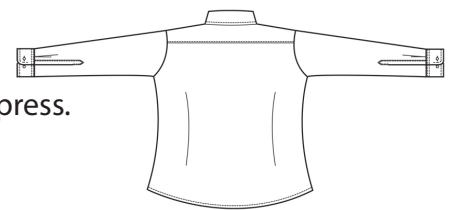
### Product Information:

- 65% Polyester/35% Cotton
- 4.25 oz. wt.
- Long sleeve
- Soft point collar with matching buttons
- Shirt body has 2 darts in the back providing a contoured fit
- Shirt-tail hem allows you to wear the blouse tucked or untucked
- Laundry friendly
- Women's sizes XXS – 3XL

Front



Back



### Care Details:

Machine wash separately ~ warm permanent press.  
 Only non-chlorine bleach when needed.  
 Tumble dry ~ medium permanent press.  
 Remove promptly.  
 Iron if needed ~ medium.  
 May be dry cleaned.

### Product Measurements

Sizes	XXS	XS	S	M	L	XL	2XL	3XL
Neck Width	13 <sup>1/4</sup>	14 <sup>1/4</sup>	15 <sup>1/4</sup>	16 <sup>1/4</sup>	17 <sup>1/4</sup>	18 <sup>1/4</sup>	19 <sup>1/4</sup>	20 <sup>1/4</sup>
Bust	36 <sup>1/2</sup>	39 <sup>1/2</sup>	42 <sup>1/2</sup>	45 <sup>1/2</sup>	49 <sup>1/2</sup>	53 <sup>1/2</sup>	57 <sup>1/2</sup>	61 <sup>1/2</sup>
Center Back Length	26 <sup>1/4</sup>	26 <sup>5/8</sup>	27	27 <sup>3/8</sup>	28	28 <sup>5/8</sup>	29 <sup>1/4</sup>	29 <sup>7/8</sup>
Sleeve Length (Center back)	30	31	32	33	34	35	36	37

### Colors:

