

Women's Short-Sleeve Broadcloth Value Shirt

Style 5313



Product Information:

- 65% Polyester/35% Cotton Broadcloth
- 3.1 oz. wt.colors, 3.5 oz. wt. white
- Easy care fabric
- Short sleeve
- Stay collar
- Left chest pocket (white only)
- Laundry friendly
- Sizes XXS – 3XL

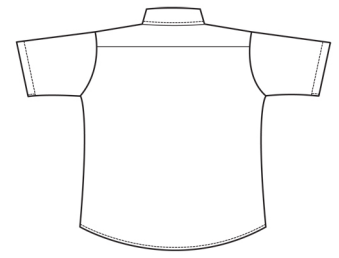
Front



Care Details:

Machine wash ~ warm.
 Only non-chlorine bleach when needed.
 USE NO SOLVENTS.
 Tumble dry ~ warm.
 Iron if needed ~ warm.

Back



Product Measurements

Sizes	XXS	XS	S	M	L	XL	2XL	3XL
	0-2	4-6	8-10	12-14	16-18	20-22	24-26	28-30
Neck Width	13 ^{1/2}	14 ^{1/2}	15 ^{1/2}	16 ^{1/2}	17 ^{1/2}	18 ^{1/2}	19 ^{1/2}	20 ^{1/2}
Bust	40	42	44	46	50	54	58	62
Center Back Length	25 ^{1/2}	26	26 ^{1/2}	27	27 ^{1/2}	28	28 ^{1/2}	29
Sleeve Length (Cap)	7 ^{3/4}	8 ^{1/4}	8 ^{3/4}	9 ^{1/2}	10 ^{1/2}	11 ^{1/2}	12 ^{1/2}	13 ^{1/2}

Colors:



000
White



010
Black



013
Burgundy



061
French
Blue