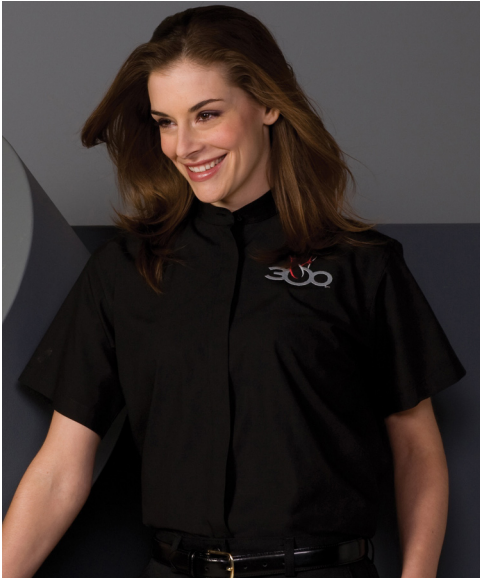


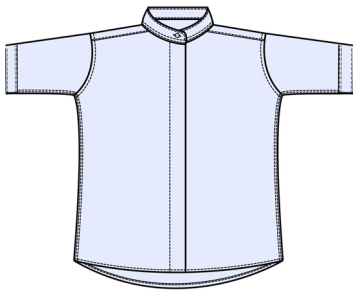
Women's Short-Sleeve Banded Collar Shirt Style 5346



Product Information:

- 65% Polyester/35% Cotton broadcloth
- 3.5 oz wt.
- Covered placket with matching buttons
- Machine washable
- Women's Sizes XXS – 3XL

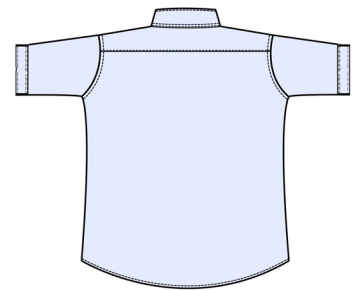
Front



Care Details:

Machine wash ~ warm.
Only non-chlorine bleach when needed.
USE NO SOLVENTS.
Tumble dry ~ warm.
Iron if needed ~ warm.

Back



Product Measurements

Sizes	XXS	XS	S	M	L	XL	2XL	3XL
Neck Width	13 ^{1/2}	14 ^{1/2}	15 ^{1/2}	16 ^{1/2}	17 ^{1/2}	18 ^{1/2}	19 ^{1/2}	20 ^{1/2}
Bust	40	42	44	46	50	54	58	62
Center Back Length	25 ^{1/2}	26	26 ^{1/2}	27	27 ^{1/2}	28	28 ^{1/2}	29
Sleeve Length (Cap)	7 ^{3/4}	8 ^{1/4}	8 ^{3/4}	9 ^{1/2}	10 ^{1/2}	11 ^{1/2}	12 ^{1/2}	13 ^{1/2}

Colors:

