

# Women's Tuxedo Shirt

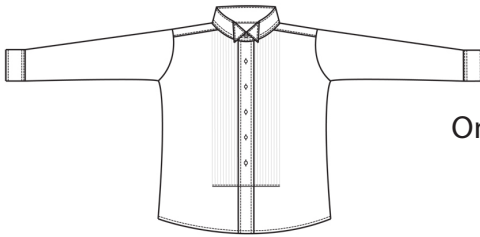
## Style 5390



### Product Information:

- 65% Polyester/35% Cotton
- 2.75/2.90 oz. wt.
- 1/8" pintuck pleated bib
- Convertible cuffs
- Black studs and clear buttons
- Sizes: XXS – 3XL

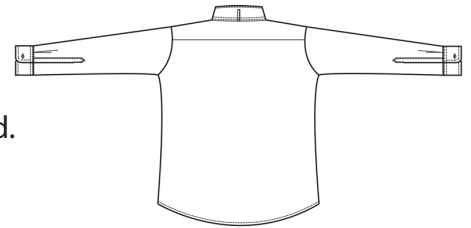
Front



### Care Details:

Machine wash ~ warm.  
 Only non-chlorine bleach when needed.  
 Tumble dry ~ warm.  
 Iron if needed ~ medium.  
 USE NO SOLVENTS.

Back



### Product Measurements

Sizes	XXS	XS	S	M	L	XL	2XL	3XL
Neck Width	13	13 <sup>3/4</sup>	14 <sup>1/2</sup>	15 <sup>3/4</sup>	16 <sup>1/2</sup>	17 <sup>3/4</sup>	18 <sup>3/4</sup>	19 <sup>3/4</sup>
Bust	37	39 <sup>1/2</sup>	42	45	48 <sup>1/2</sup>	51	54	57
Center Back Length	27 <sup>1/2</sup>	28	28 <sup>1/2</sup>	29	29 <sup>3/4</sup>	30 <sup>1/4</sup>	30 <sup>3/4</sup>	32 <sup>1/2</sup>
Sleeve Length (Centerback)	30 <sup>1/2</sup>	31 <sup>1/2</sup>	32 <sup>1/2</sup>	33 <sup>1/2</sup>	34 <sup>1/2</sup>	35 <sup>1/2</sup>	36 <sup>1/2</sup>	37 <sup>1/2</sup>

### Colors:



000  
White