

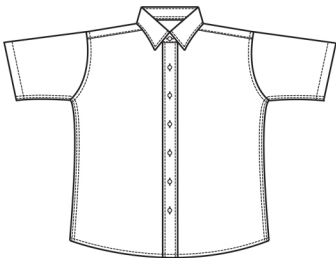
Women's Short-Sleeve Pinpoint Oxford Style 5925



Product Information:

- 70% Cotton/30% Polyester
- 4.25/4.50 oz. wt.
- Cotton rich 80's 2 - ply fabric
- Single needle tailoring
- Fused collars
- Soft Collar
- Short sleeve
- No pocket
- Laundry friendly
- Sizes: XXS - 3XL

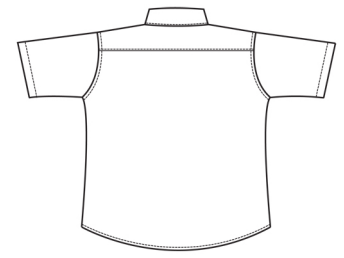
Front



Care Details:

Machine wash ~ warm.
Only non-chlorine bleach when needed.
USE NO SOLVENTS.
Tumble dry ~ warm.
Iron if needed ~ warm.

Back



Product Measurements

Sizes	XXS	XS	S	M	L	XL	2XL	3XL
	0-2	4-6	8-10	12-14	16-18	20-22	24-26	28-30
Neck Width	13	14	15	16	17	18	19	20
Bust	38	40	42	44	47	51	55	59
Center Back Length	25 ^{1/4}	25 ^{3/4}	26 ^{1/4}	26 ^{3/4}	27 ^{1/4}	27 ^{3/4}	28 ^{1/4}	28 ^{3/4}
Sleeve Length (Cap)	7 ^{1/4}	7 ^{3/4}	8 ^{1/4}	8 ^{3/4}	9 ^{3/4}	10 ^{3/4}	11 ^{3/4}	12 ^{3/4}

Colors:



000
White



001
Blue



009
Grey



061
French
Blue



075
Sand
Nailhead