

# Women's Cargo Short

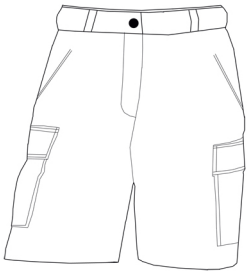
## Style 8468



### Product Information:

- 65% Polyester/35% Cotton; 7.24 oz. wt.
- Flat front
- Functional Velcro® closure cargo pockets
- Two front pockets; One set-in back pocket
- Button closure with brass zipper
- Easy care with stain and wrinkle release finish
- 9/9<sup>1/2</sup>" inseam
- Laundry friendly
- Misses ~ 0-18
- Women's ~ 18W - 28W

Front



### Care Details:

Machine wash ~ warm permanent press.  
 Only non-chlorine bleach when needed.  
 Tumble dry ~ medium permanent press.  
 Remove promptly.  
 Iron if needed ~ medium.  
 May be dry cleaned.

Back



### Product Measurements

Sizes	0	2	4	6	8	10	12	14	16	18
Waist	27 <sup>1/2</sup>	28 <sup>1/2</sup>	29 <sup>1/2</sup>	30 <sup>1/2</sup>	31 <sup>1/2</sup>	32 <sup>1/2</sup>	34	35 <sup>1/2</sup>	37	39
Inseam	9 <sup>1/2</sup>	9 <sup>1/2</sup>	9 <sup>1/2</sup>	9 <sup>1/2</sup>	9 <sup>1/2</sup>	9 <sup>1/2</sup>	9 <sup>1/2</sup>	9 <sup>1/2</sup>	9 <sup>1/2</sup>	9 <sup>1/2</sup>

Sizes	18W	20W	22W	24W	26W	28W
Waist	41	43	45	47	49	51
Inseam	9 <sup>1/2</sup>	9 <sup>1/2</sup>	9 <sup>1/2</sup>	9 <sup>1/2</sup>	9 <sup>1/2</sup>	9 <sup>1/2</sup>

### Colors:



005  
Tan



007  
Navy



010  
Black