

Women's Chino Cargo Short

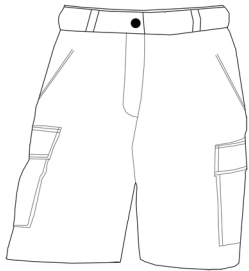
Style 8473



Product Information:

- 65% Polyester/35% Cotton; 7.5 oz. wt.
- Classic cut, waistband sits just below natural waistline
- Two front pockets and one set-in back pocket
- Two cargo pockets with sewn down flaps
- Button closure with brass zippers
- 9/9^{1/2}" inseam
- Machine washable and laundry friendly
- Misses' sizes: 0 - 18
- Women's sizes: 18W - 28W

Front



Care Details:

Machine wash ~ warm permanent press.
 Only non-chlorine bleach when needed.
 Tumble dry ~ medium permanent press.
 Remove promptly.
 Iron if needed ~ medium.
 May be dry cleaned.

Back



Product Measurements

Sizes	0	2	4	6	8	10	12	14	16	18
Waist	27 ^{1/2}	28 ^{1/2}	29 ^{1/2}	30 ^{1/2}	31 ^{1/2}	32 ^{1/2}	34	35 ^{1/2}	37	39
Inseam	9 ^{1/2}	9 ^{1/2}	9 ^{1/2}	9 ^{1/2}	9 ^{1/2}	9 ^{1/2}	9 ^{1/2}	9 ^{1/2}	9 ^{1/2}	9 ^{1/2}

Sizes	18W	20W	22W	24W	26W	28W
Waist	41	43	45	47	49	51
Inseam	9 ^{1/2}	9 ^{1/2}	9 ^{1/2}	9 ^{1/2}	9 ^{1/2}	9 ^{1/2}

Colors:



005
Tan



007
Navy



010
Black