

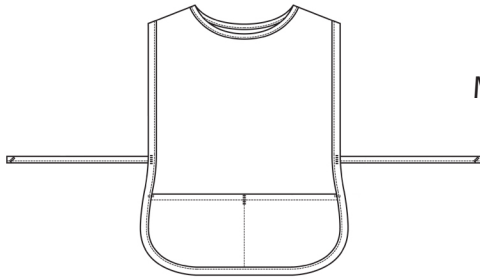
Cobbler Apron - Regular Style 9006



Product Information:

- 65% Polyester/35% Cotton Twill
- 7.2 oz. wt.
- Center divided patch pocket
- Regular, 28"L X 17"W

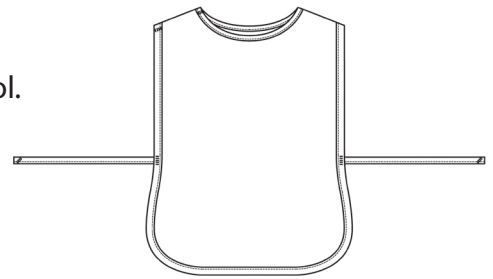
Front



Care Details:

Machine wash with like colors ~ cool.
DO NOT BLEACH.
Tumble dry.

Back



Product Measurements

	Measurement
Length	28"
Waist Width	20"
Neck Width	17"
Total Width (including ties)	55"
Pocket Height	9"
Pocket Width	20"

Colors:



000
White



007
Navy



010
Black



012
Red



015
Khaki



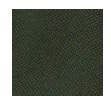
041
Royal



044
Teal



063
Wine



084
Hunter