

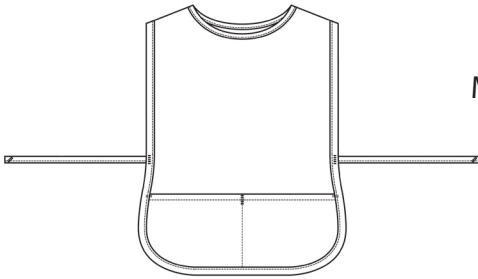
# Cobbler Apron - Tall Style 9006T



## **Product Information:**

- 65% Polyester/35% Cotton Twill
- 7.2 oz. wt.
- Center divided patch pocket
- 31.5"L X 17.75"W

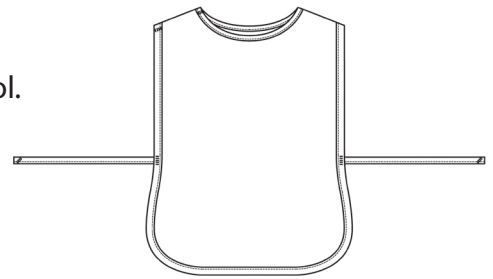
Front



## **Care Details:**

Machine wash with like colors ~ cool.  
DO NOT BLEACH.  
Tumble dry.

Back



## **Product Measurements**

	<b>Measurement</b>
Length	31 1/2"
Waist Width	22"
Neck Width	17 3/4"
Total Width (including ties)	56 1/2"
Pocket Height	9 3/4"
Pocket Width	22"

## **Colors:**



000  
White



007  
Navy



010  
Black



012  
Red



015  
Khaki



041  
Royal



044  
Teal



063  
Wine



084  
Hunter