



STYLE # 2026

July 3, 2014

DESCRIPTION: V-Neck Military Sweater with Velcro Epauettes. Poly-Cotton Patches on Shoulders & Elbows. Name & Badge Plate Swift Attached

CONTENT: 70% Durapil™ Acrylic/ 30% Wool

FABRIC TYPE: Jersey

FIT: Classic

SIZE CLASS: Unisex Adult Regular

PRODUCT: Public Safety, Military Sweaters

GENDER: Unisex

GAUGE: 7 gg

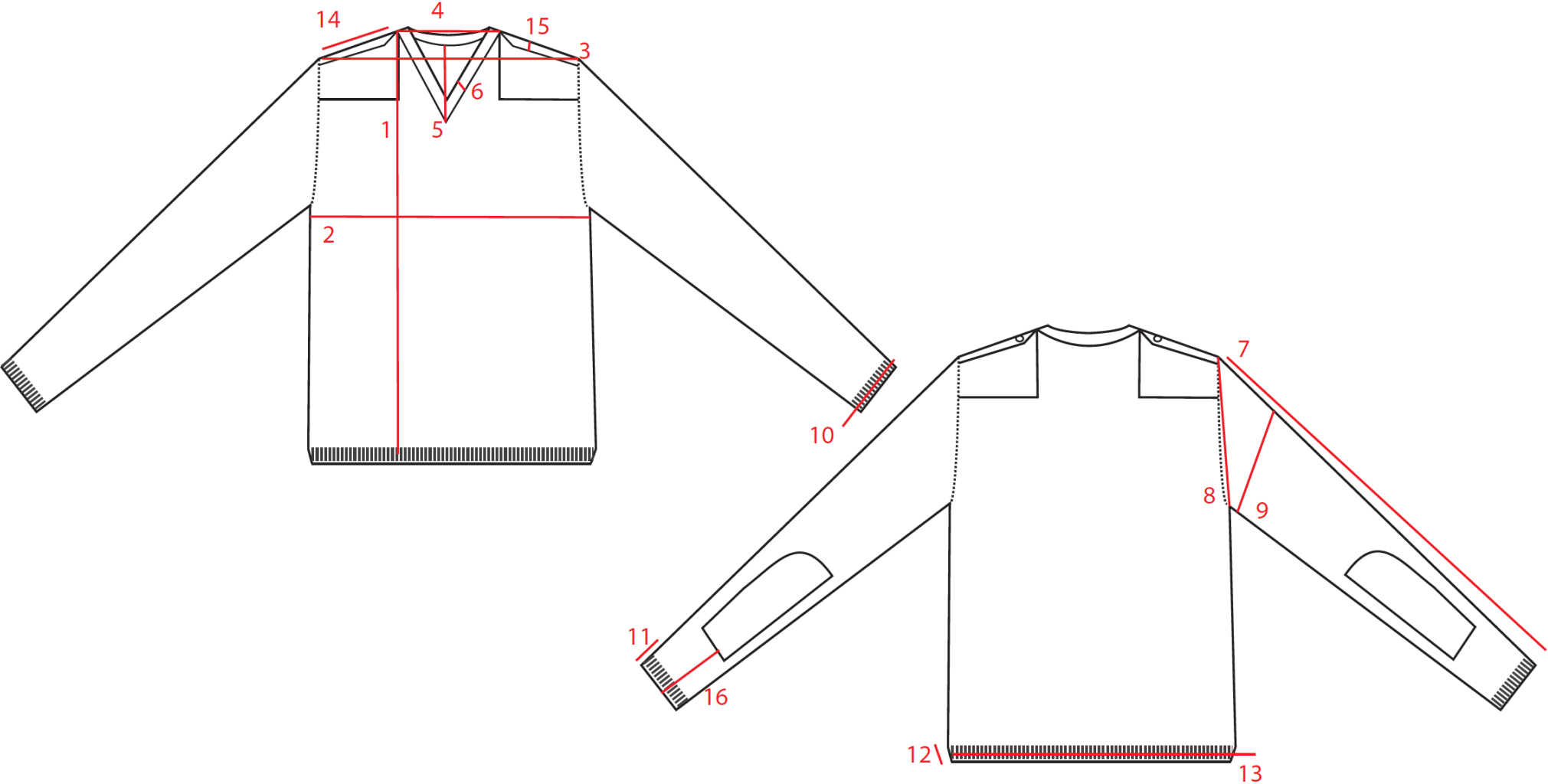
SIZE RANGE: XS-5XL

COLOR: Black (368) & Dark Navy (4019)

GRADE SHEET

Point of Measurement (P.O.M)	XS	S	M	L	XL	2XL	3XL	4XL	5XL	TOL (+/-)
1.Length (From HSP)	25	26	27	28	29	30	31	32	33	1
2.Chest (1" below armhole)	19	20	21 ½	23	24 ½	26	27 ½	29	30 ½	1
3.Shoulders(Seam to Seam)	18 ½	19 ½	20	21	22	23	24	25	26	½
4.Neck Width Opening (Including Rib)	6 ½	6 ½	7	7	7	7	7 ¼	7 ½	7 ½	¼
5.Front Neck Drop (Seam to seam)	6 ½	6 ½	7	7	7	7	7 ¼	7 ½	7 ½	¼
6.Collar Binding Rib	1 ¼	1 ¼	1 ¼	1 ¼	1 ¼	1 ¼	1 ¼	1 ¼	1 ¼	-
7.Sleeve Length (From Shoulder)	24	24 ½	25	25 ½	26	26 ½	27	27 ½	28	1
8.Armhole(Straight seam to seam)	9	9 ½	10	10 ½	11	11 ½	12	12 ½	13	½
9.Bicep (7" from shoulder seam)	7 ½	7 ½	8	8 ½	9	9 ½	10	10	10 ½	½
10. Cuff Width (Flat)	3 ½	3 ½	3 ½	4	4	4 ½	4 ½	4 ½	4 ½	¼
11.Cuff Rib	2 ½	2 ½	2 ½	2 ½	2 ½	2 ½	2 ½	2 ½	2 ½	-
12.Waistband Rib	2 ½	2 ½	2 ½	2 ½	2 ½	2 ½	2 ½	2 ½	2 ½	-
13.Sweep	15	16	17 ½	19	20 ½	22	23 ½	25	26 ½	1
14.Epaulette Length (Width - 2")	5	5 ½	5 ½	6	6 ½	7	7 ½	8	8 ½	¼
15.Shoulder Patch (Length - 5")	6	6 ½	6 ½	7	7 ½	8	8 ¾	8 ¾	9 ¼	½
16.Elbow Patch Height	4	4 ¼	4 ½	4 ¾	5	5 ¼	5 ½	5 ¾	6	¼

P.O.M SKETCH



ELBOW PATCH

