



STYLE # 8083

July 21, 2014

DESCRIPTION: Crew Neck Military Rib Sweater with Velcro Epaulettes. Poly- Cotton Patches on Shoulders and Elbows. Badge plate & Name plate Swift Attached.

CONTENT: : 100% Durapil™ Acrylic

FABRIC TYPE: 2 x 2 Rib

FIT: Classic

SIZE RANGE: XS-5XL

PRODUCT: Public Safety, Commando Sweater

GENDER: Unisex

GAUGE: 7gg

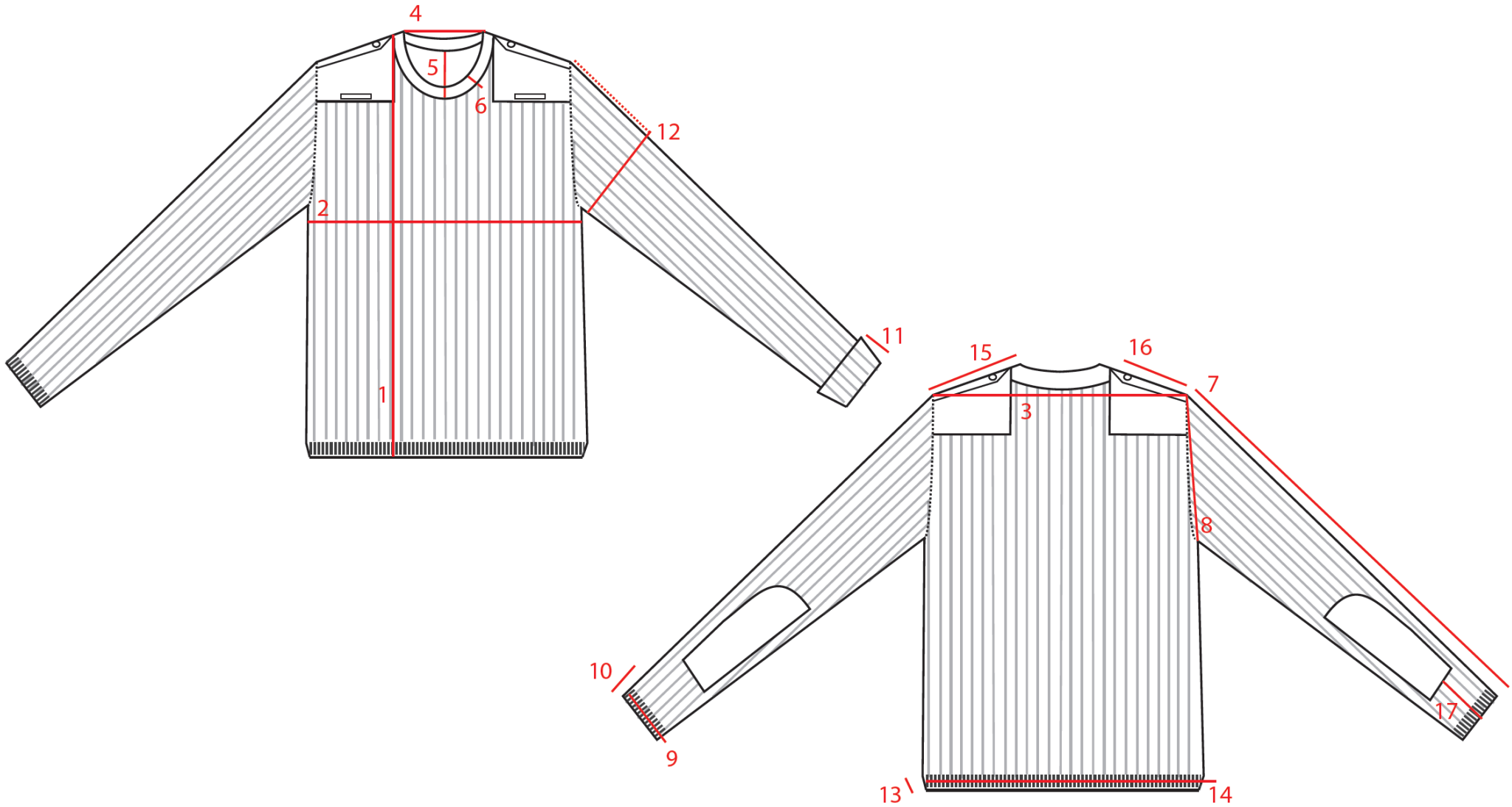
SIZE CLASS: Unisex Adult Regular

COLOR: Black (368) & Dark Navy (4019) & Brown (1539)

GRADE SHEET

Point of Measurement (P.O.M)	XS	S	M	L	XL	2XL	3XL	4XL	5XL	TOL (+/-)
1.Length (From HSP)	25	26	27	28	29	30	31	32	33	1
2.Chest (1" below armhole)	18½	19½	21	22½	24	25½	27	28½	30	1
3.Shoulders(Seam to Seam)	18	19	19½	20½	21½	22½	24	25	26	½
4. Neck Width Opening (Excluding Rib)	7¼	7½	7¾	8	8¼	8½	8¾	9¼	9½	¼
5. Front Neck Drop (Seam to seam)	5	5	5¼	5¾	5½	5½	5¾	6	6¼	¼
6.Collar Binding Rib	1¼	1¼	1¼	1¼	1¼	1¼	1¼	1¼	1¼	-
7.Sleeve Length	22	23	24	24½	25	25½	26	26½	27	1
8.Armhole(Straight seam to seam)	8½	9	9½	10	10½	11	11½	12	12½	½
9. Cuff Width (Flat)	3½	3½	3¾	4	4	4½	4½	4½	4½	¼
10.Cuff Rib	2½	2½	2½	2½	2½	2½	2½	2½	2½	-
11.Cuff Folded	3	3	3	3	3	3	3	3	3	-
12.Bicep (Relaxed-7" from shoulder seam)	6½	6½	7	7½	8	8½	9	9	9½	½
13.Waistband Rib	2½	2½	2½	2½	2½	2½	2½	2½	2½	-
14.Sweep	14½	15½	17	18½	20	21½	23	24½	26	1
15.Epaulette Length (Width - 1¾")	5¼	5½	5½	5½	5¾	6¼	6¾	7¼	7¾	¼
16.Shoulder Patch Length (Width - 11")	5¼	5½	5¾	5¾	6	6½	7	7½	8	¼
17.Elbow Patch Height (From cuff edge)	4	4¼	4½	4¾	5	5¼	5½	5¾	6	¼

P.O.M SKETCH



ELBOW PATCH

